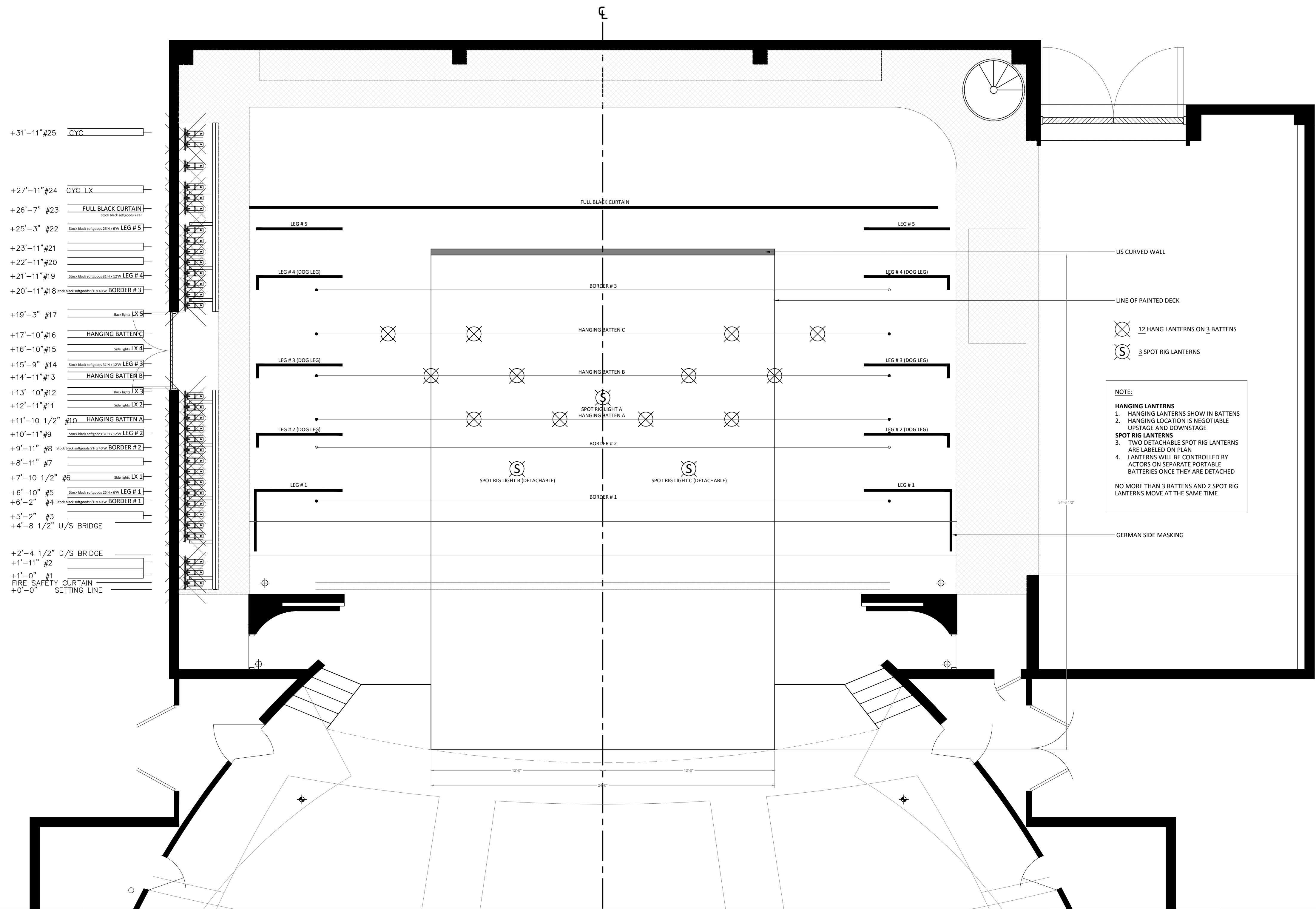


GROUND PLAN



FULL SIZE PLOT - SCALE CHECK:



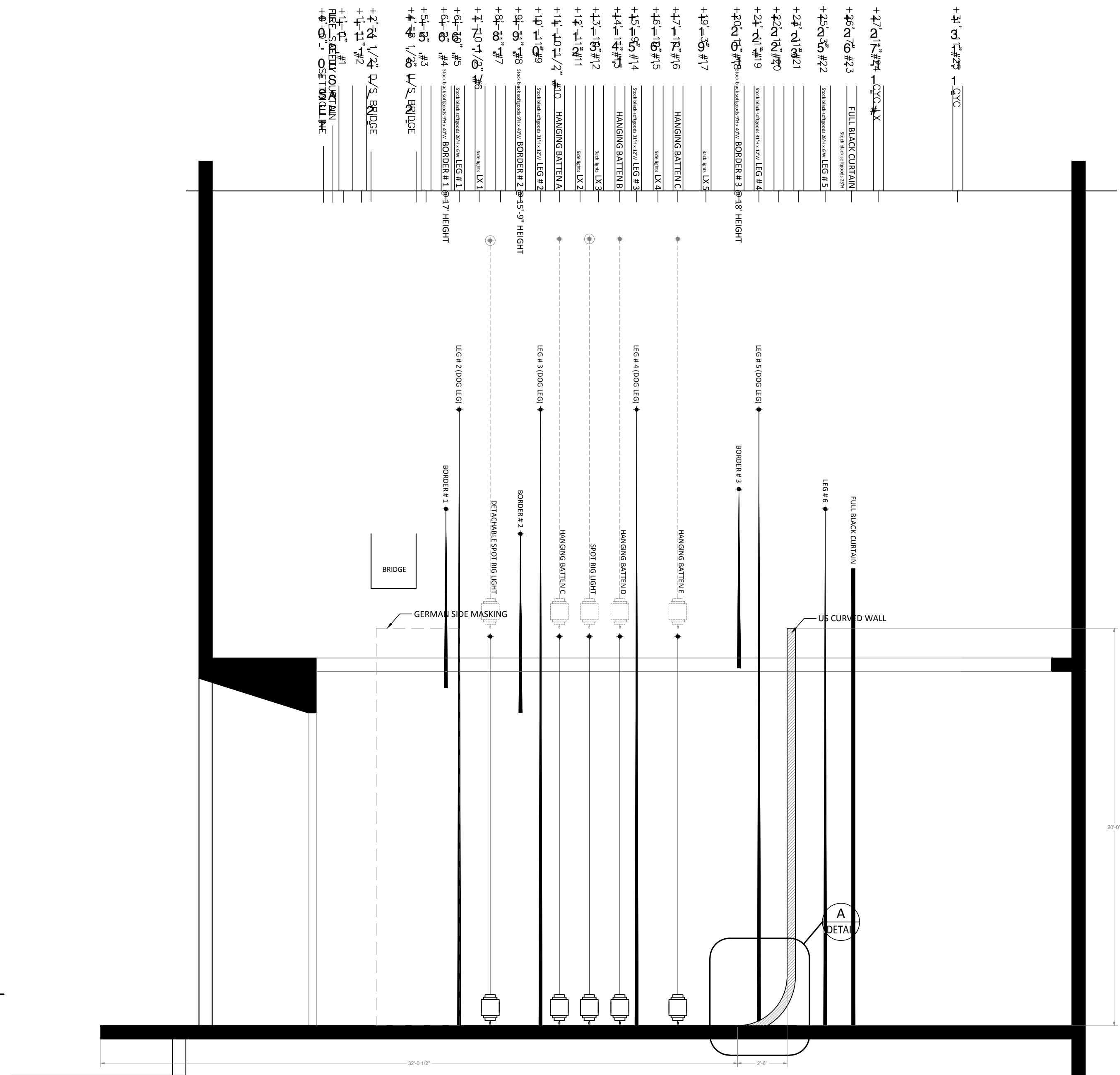
GENERAL NOTES  
- LEG AND BORDER SIZE NEGOTIABLE

MOBILE FURNITURE  
1. FLOOR PILLOW (X8)  
1.1. 2 OUT OF 8 ARE SECURED ON TOP OF PALANQUIN  
2. PALANQUIN (X2)  
3. LOW COFFEE TABLE (X2)  
4. HIGH COFFEE TABLE (X2)

HANGING FIXTURES  
• POSITIONS ARE NEGOTIABLE  
• IN TRIM AND OUT TRIM ARE NEGOTIABLE  
**12 LANTERNS ON 3 BATTENS**  
- 4 LANTERNS ON EACH BATTEN  
**3 SPOT RIG LANTERNS**  
- TWO OF THEM ARE DETACHABLE (LABELED ON PLAN)

REVISED	UNIVERSITY OF BRITISH COLUMBIA - FREDERIC WOOD THEATRE	SCALE: 1/4" = 1'-0"
DESCRIPTION: - Moved Border #1 from Inset #3 to #4 - Removed Border #4 - Moved Full black curtain from Inset #25 to #23	<b>ARABIAN NIGHTS</b> DRAWING: GROUND PLAN	NO: <b>1</b>
DATE: FEB 19, 2016	DIRECTOR: EVAN FRAYNE LIGHTING DESIGNER: SOPHIE TANG SET DESIGNER: HEIPO LEUNG DRAWN BY: HEIPO LEUNG	DATE: FEB 13, 2016

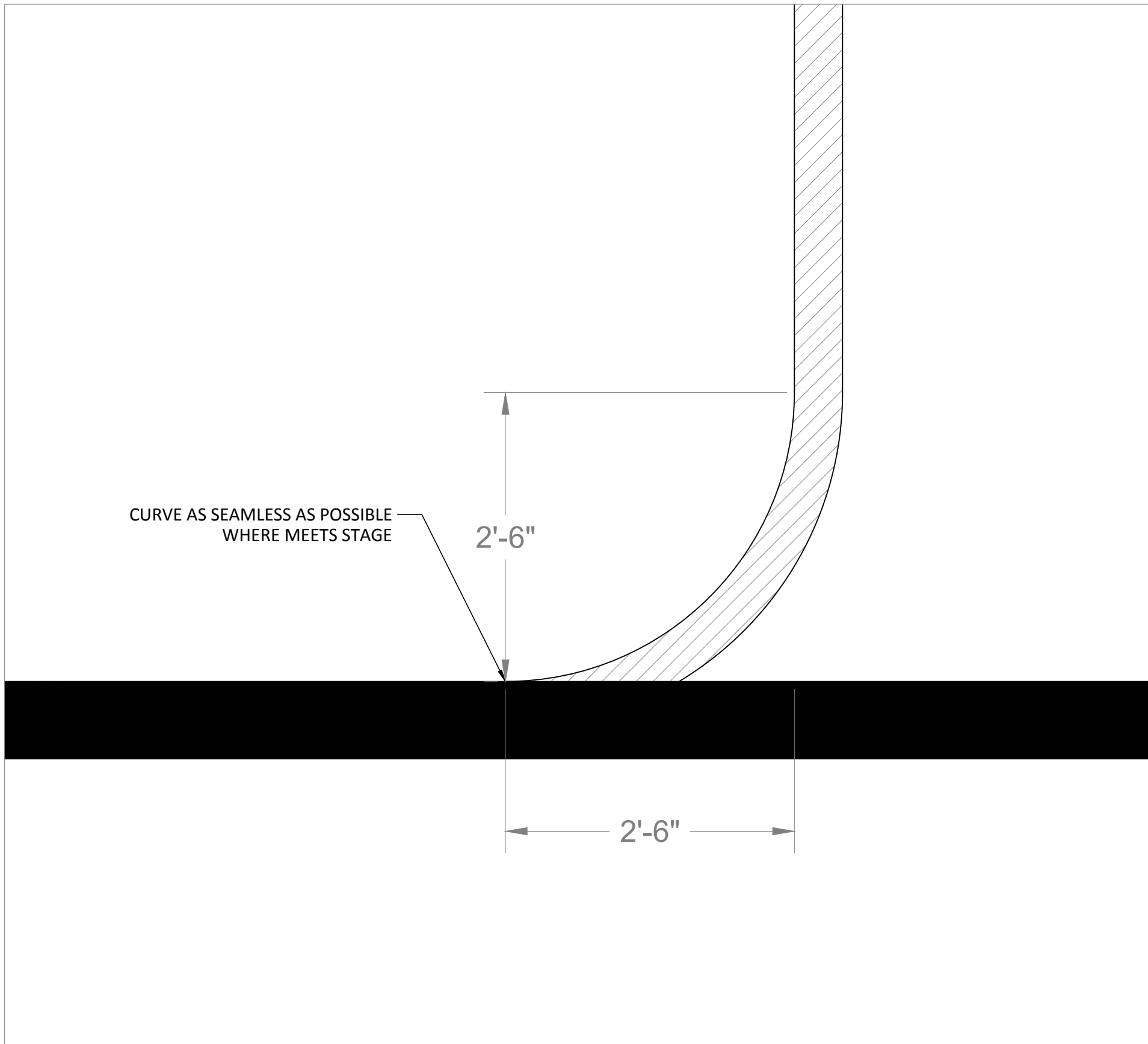
CENTERLINE SECTION



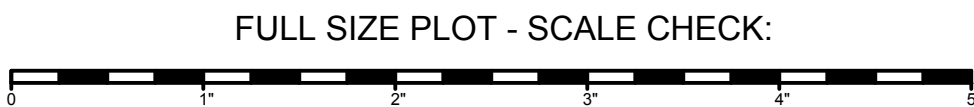
NOTE:  
SPOT RIG LANTERNS & LANTERNS ON BATTENS

- MAXIMUM OUT TRIM: 20' FROM THE DECK
- MAXIMUM IN TRIM: 1' FROM THE DECK

NO MORE THAN 3 BATTENS AND 2 SPOT RIG LANTERNS MOVE AT THE SAME TIME



A  
DETAIL UPSTAGE CURVED WALL DETAIL SCALE: 1" = 1'-0"



FULL SIZE PLOT - SCALE CHECK:

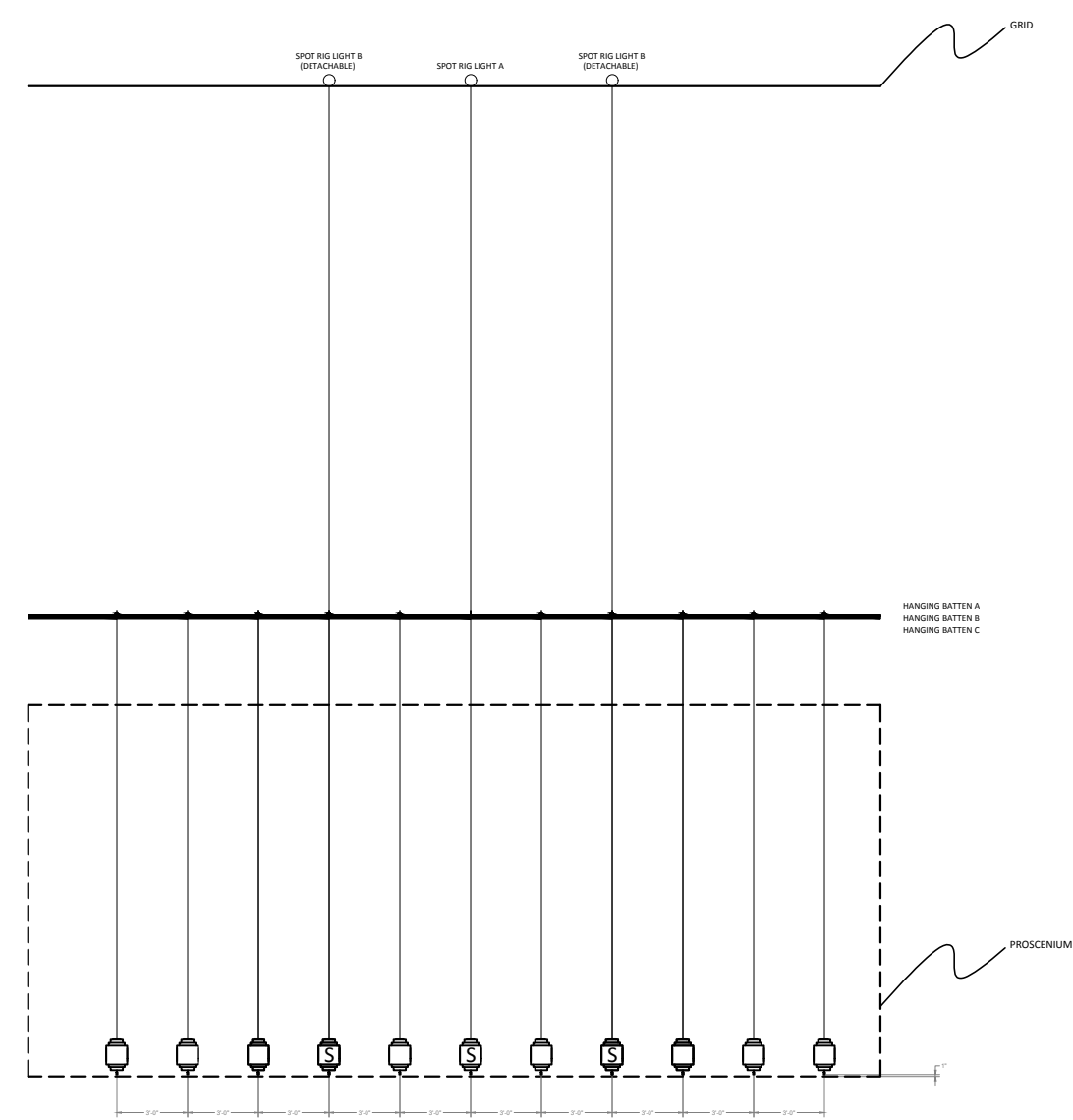
GENERAL NOTES  
- LEG AND BORDER SIZE NEGOTIABLE

MOBILE FURNITURE  
1. FLOOR PILLOW (X8)  
1.1. 2 OUT OF 8 ARE SECURED ON TOP OF PALANQUIN  
2. PALANQUIN (X2)  
3. LOW COFFEE TABLE (X2)  
4. HIGH COFFEE TABLE (X2)

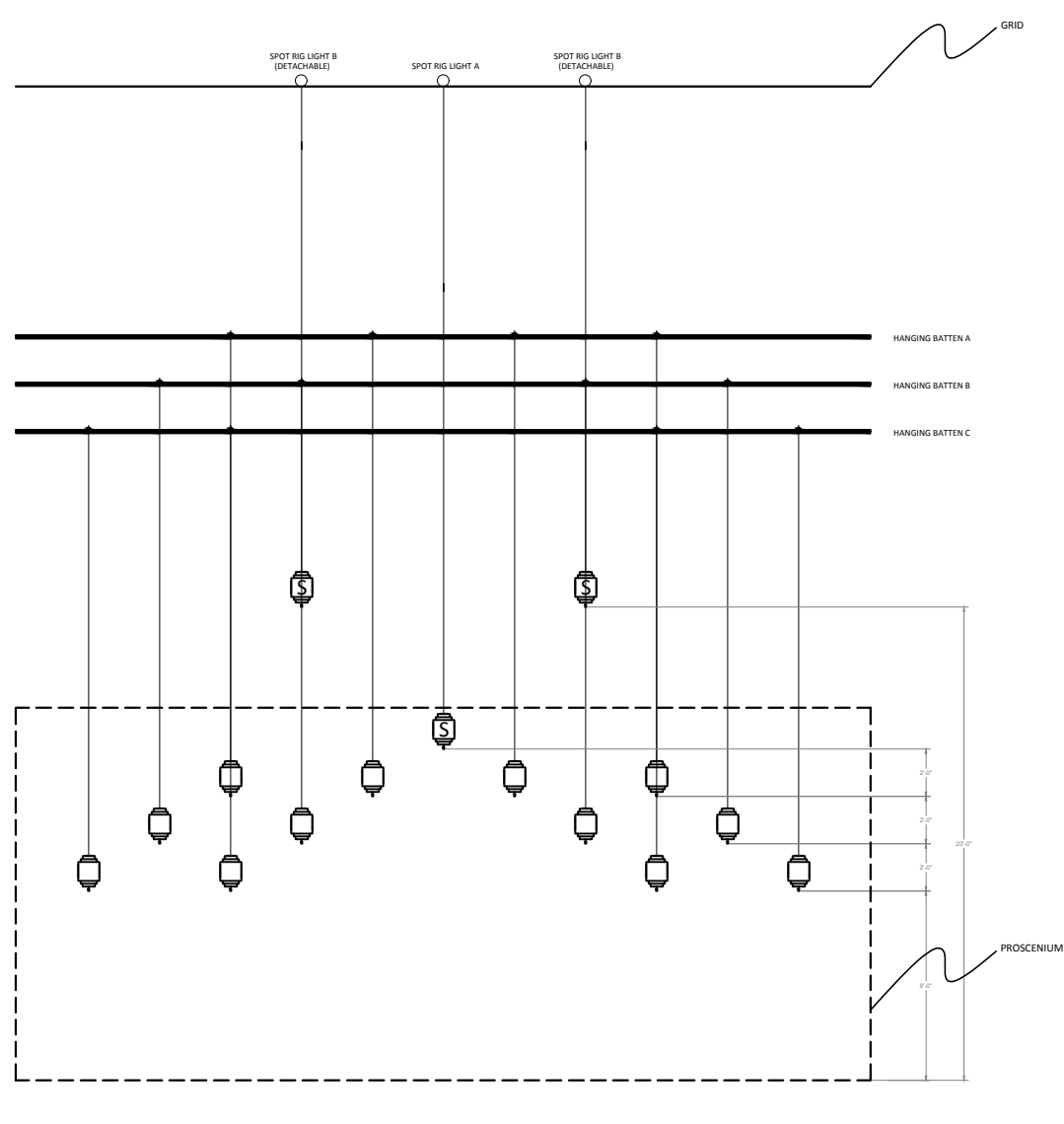
HANGING FIXTURES  
• POSITIONS ARE NEGOTIABLE  
• IN TRIM AND OUT TRIM ARE NEGOTIABLE  
12 LANTERNS ON 3 BATTENS  
- 4 LANTERNS ON EACH BATTEN  
3 SPOT RIG LANTERNS  
- TWO OF THEM ARE DETACHABLE (LABELED ON PLAN)

REVISED	UNIVERSITY OF BRITISH COLUMBIA - FREDERIC WOOD THEATRE	SCALE: 1/4" = 1'-0"
DESCRIPTION: <ul style="list-style-type: none"><li>- Moved Border #1 from Inset #3 to #4</li><li>- Removed Border #4</li><li>- Moved Full black curtain from Inset #25 to #23</li></ul>	<b>ARABIAN NIGHTS</b> DRAWING: CENTERLINE SECTION	NO: <b>2</b>
DATE: FEB 19, 2016	DIRECTOR: EVAN FRAYNE LIGHTING DESIGNER: SOPHIE TANG SET DESIGNER: HEIPO LEUNG DRAWN BY: HEIPO LEUNG	DATE: FEB 13, 2016

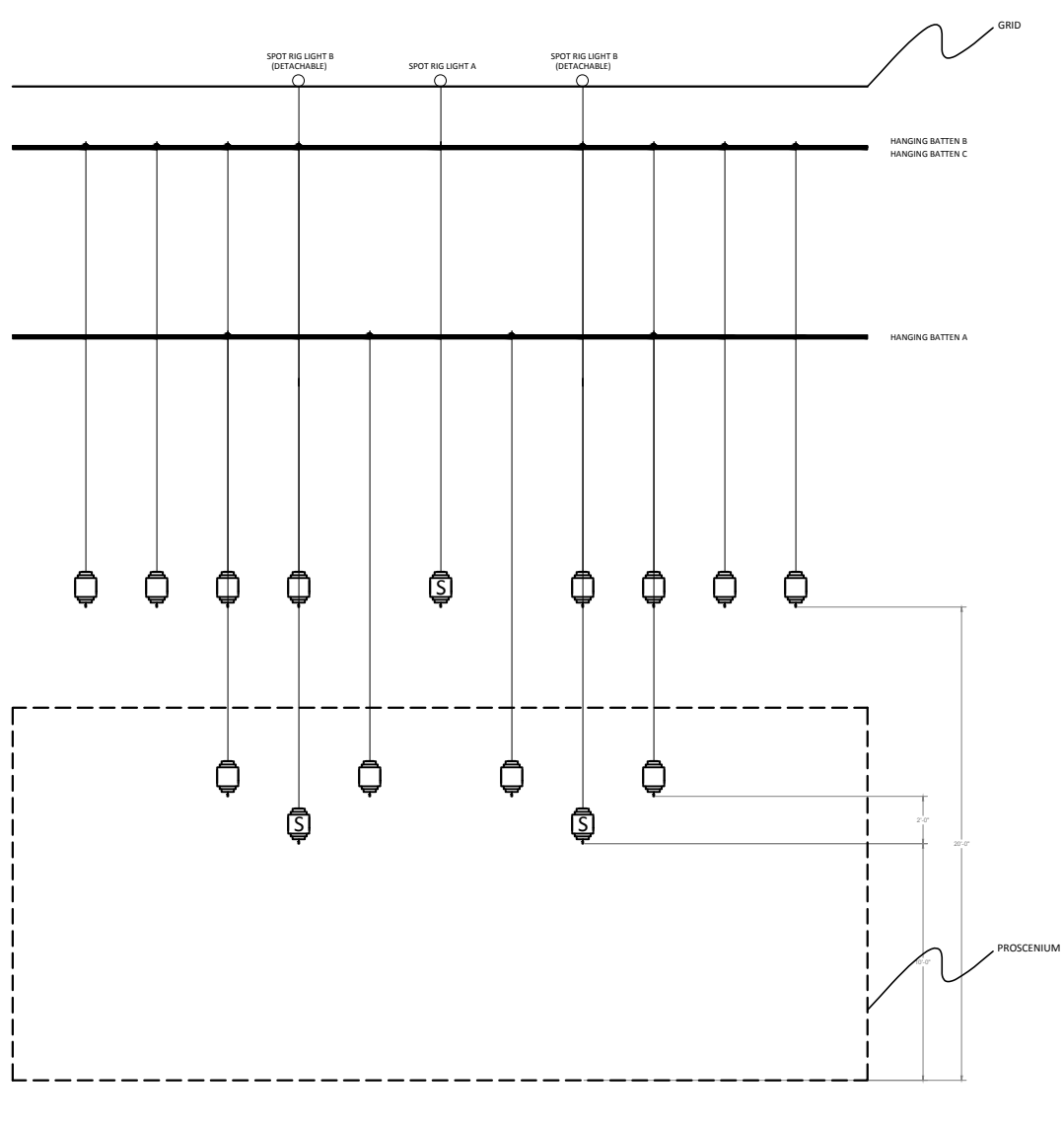
HANGING LIGHTING FIXTURES POSITIONS



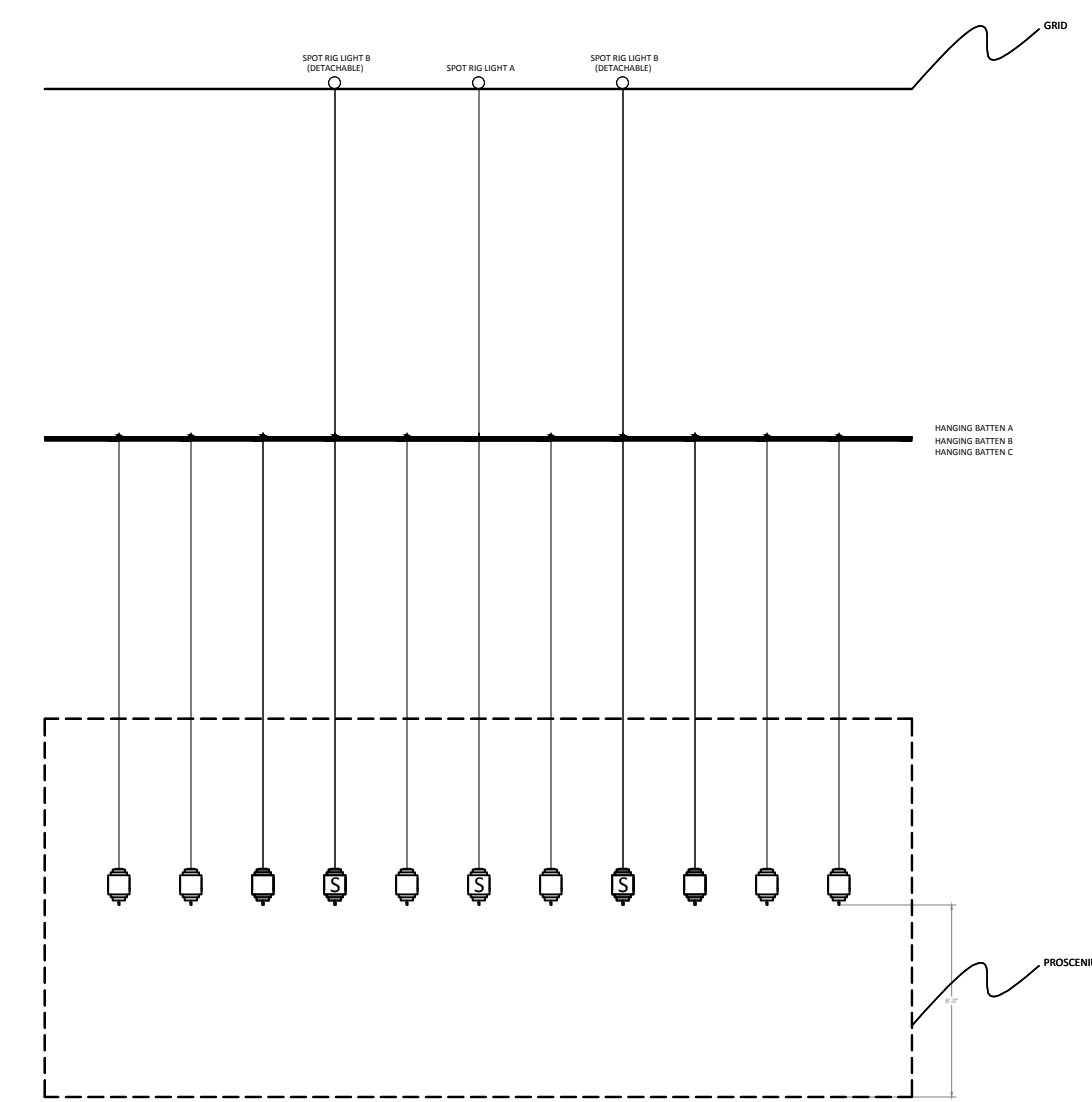
POSITION A ELEVATION



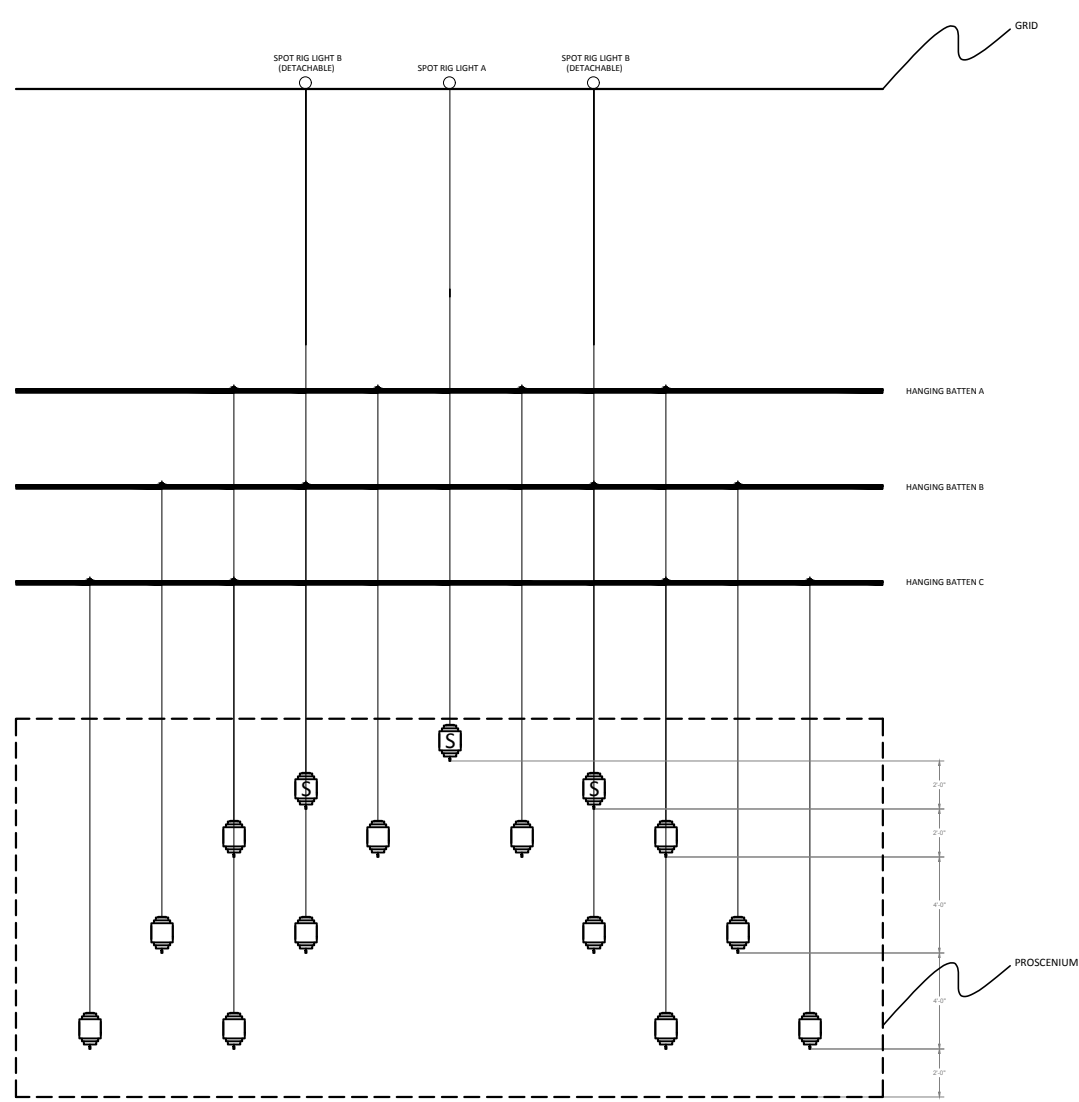
POSITION C ELEVATION



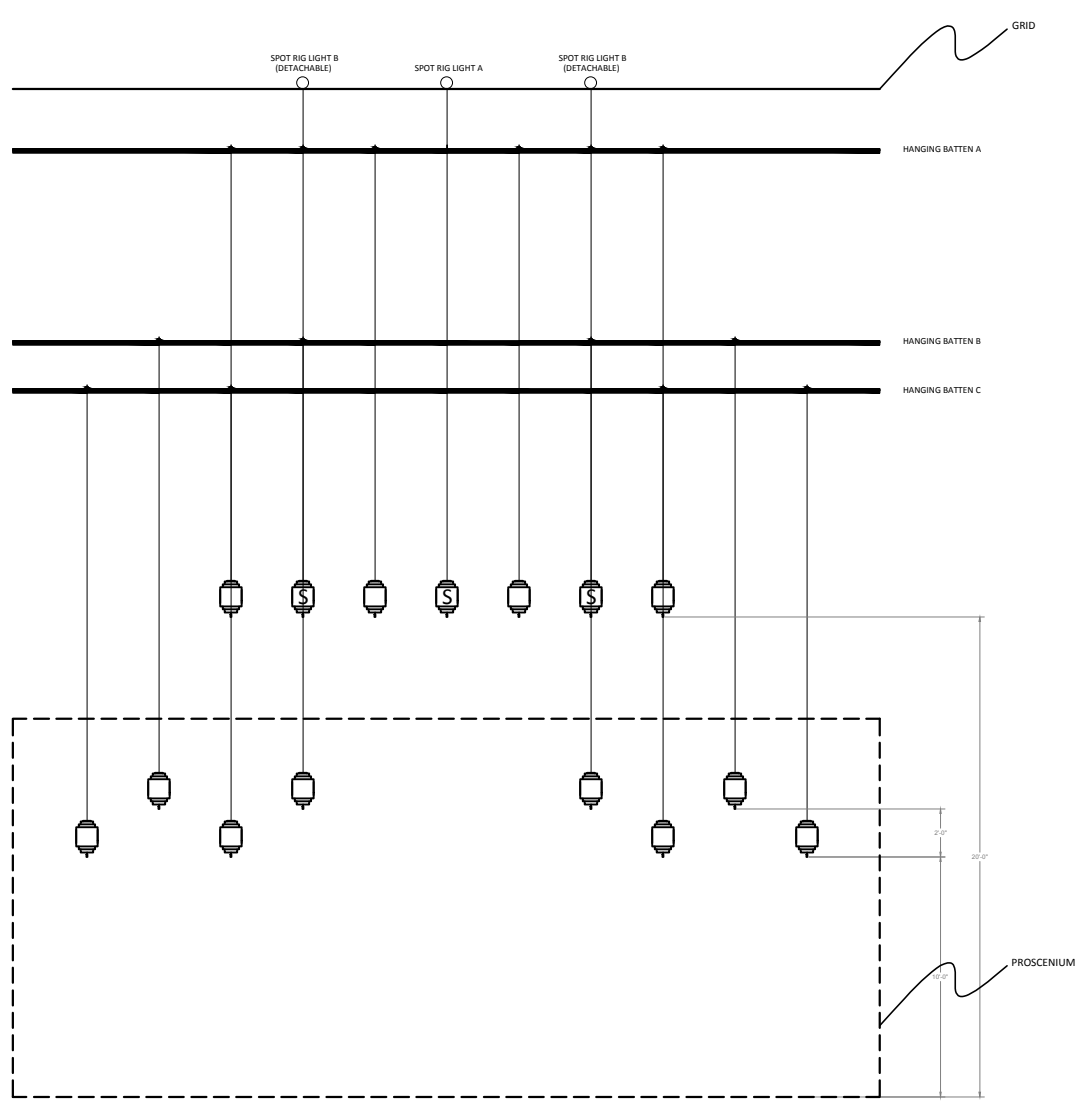
POSITION E ELEVATION



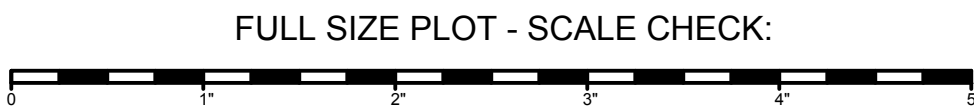
POSITION B ELEVATION



POSITION D ELEVATION



POSITION F ELEVATION



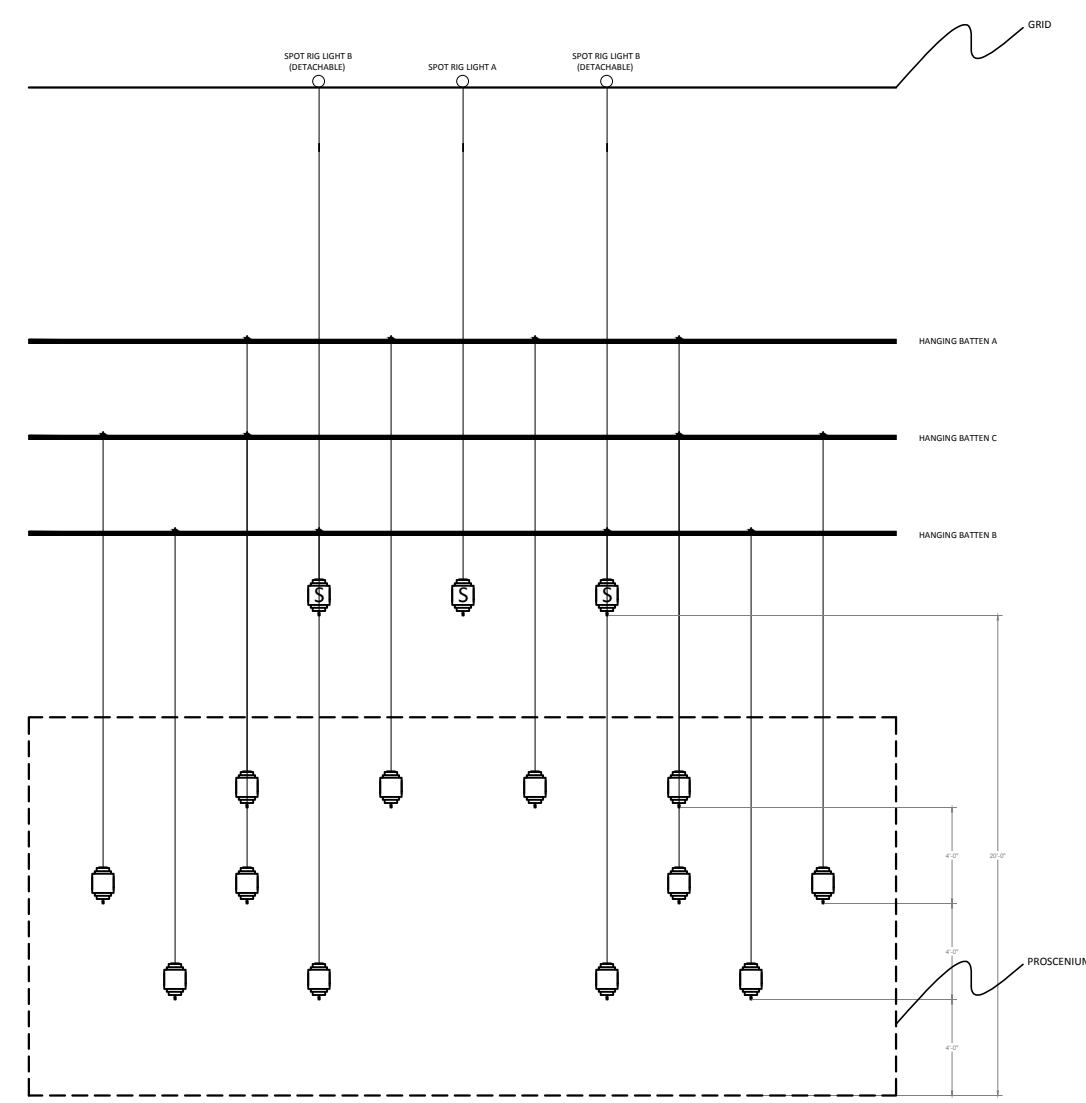
GENERAL NOTES  
- LEG AND BORDER SIZE NEGOTIABLE

- MOBILE FURNITURE
- FLOOR PILLOW (X8)
    - 2 OUT OF 8 ARE SECURED ON TOP OF PALANQUIN
  - PALANQUIN (X2)
  - LOW COFFEE TABLE (X2)
  - HIGH COFFEE TABLE (X2)

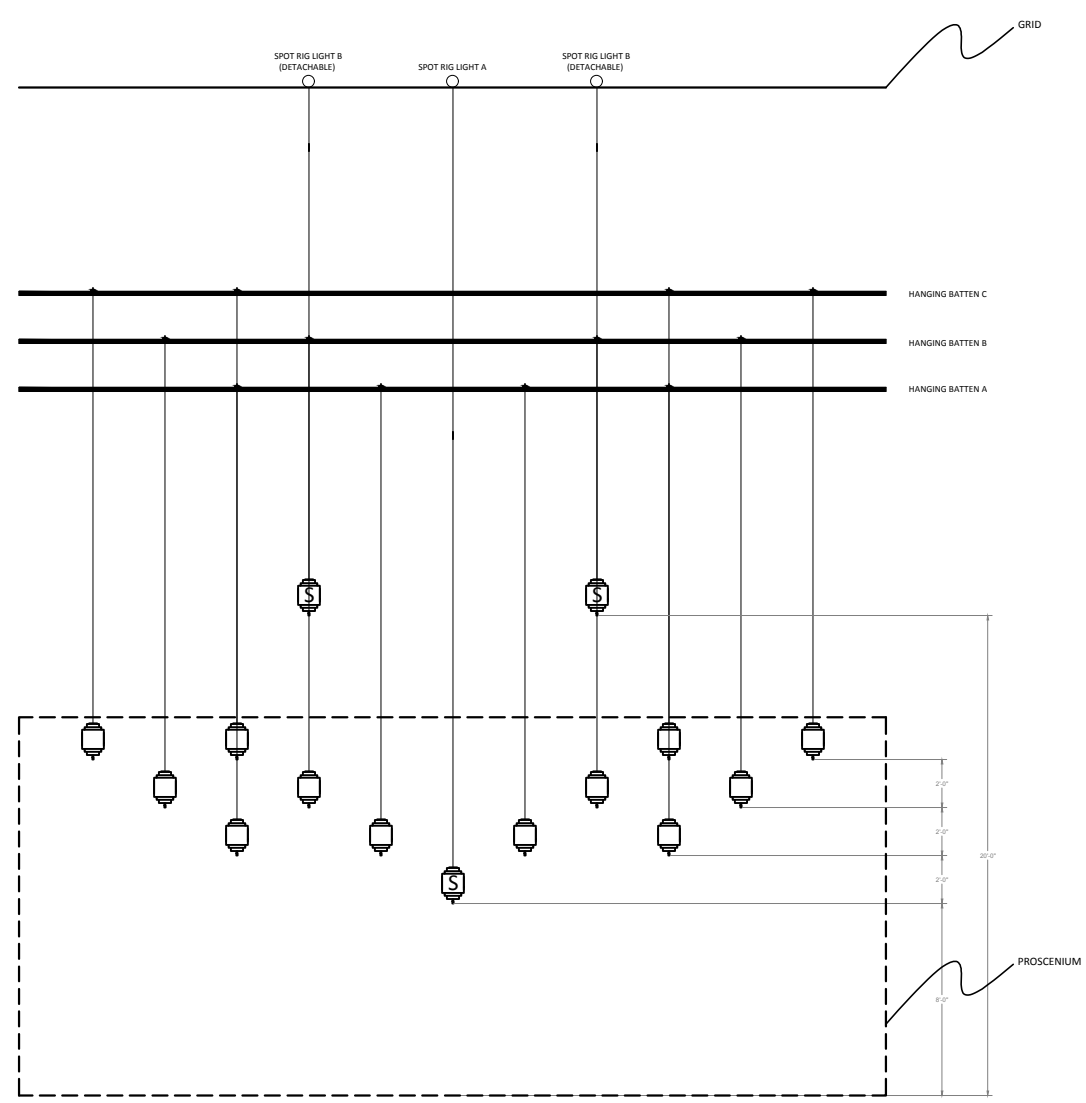
- HANGING FIXTURES
- POSITIONS ARE NEGOTIABLE
  - IN TRIM AND OUT TRIM ARE NEGOTIABLE
- 12 LANTERNS ON 3 BATTENS**  
- 4 LANTERNS ON EACH BATTEN
- 3 SPOT RIG LANTERNS**  
- TWO OF THEM ARE DETACHABLE (LABELED ON PLAN)

REVISED	UNIVERSITY OF BRITISH COLUMBIA - FREDERIC WOOD THEATRE	SCALE: 1/8" = 1'-0"
DESCRIPTION: NO INFORMATION HAS BEEN CHANGED BUT A NEW WAY TO REPRESENT THE PROSCENIUM TO MAKE THE DRAWING MORE COMPREHENSIBLE	<b>ARABIAN NIGHTS</b> DRAWING: HANGING FIXTURES POSITIONS	NO: <b>3</b>
DATE: FEB 17, 2016	DIRECTOR: EVAN FRAYNE LIGHTING DESIGNER: SOPHIE TANG SET DESIGNER: HEIPO LEUNG DRAWN BY: HEIPO LEUNG	DATE: FEB 13, 2016

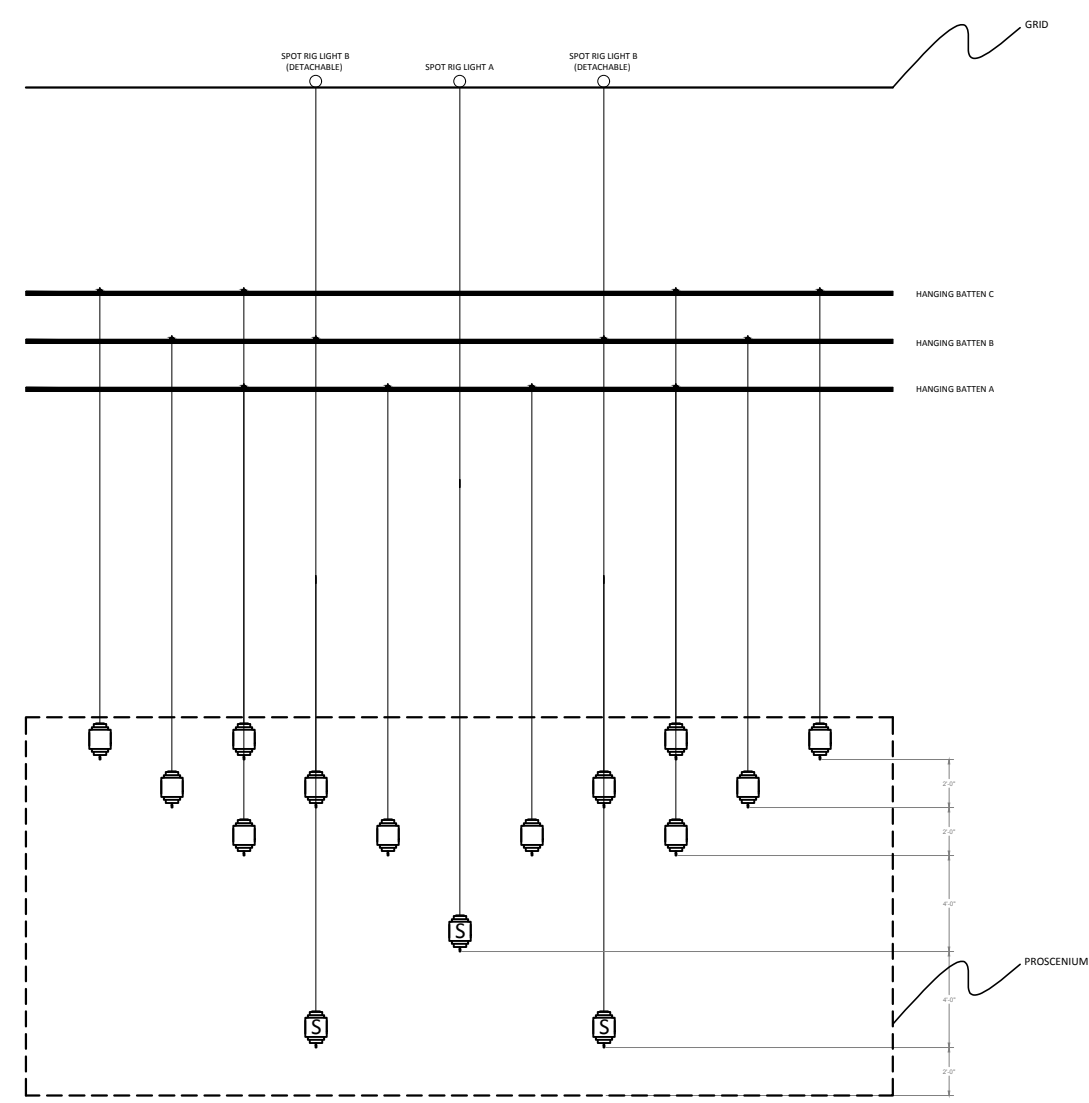
HANGING LIGHTING FIXTURES POSITIONS



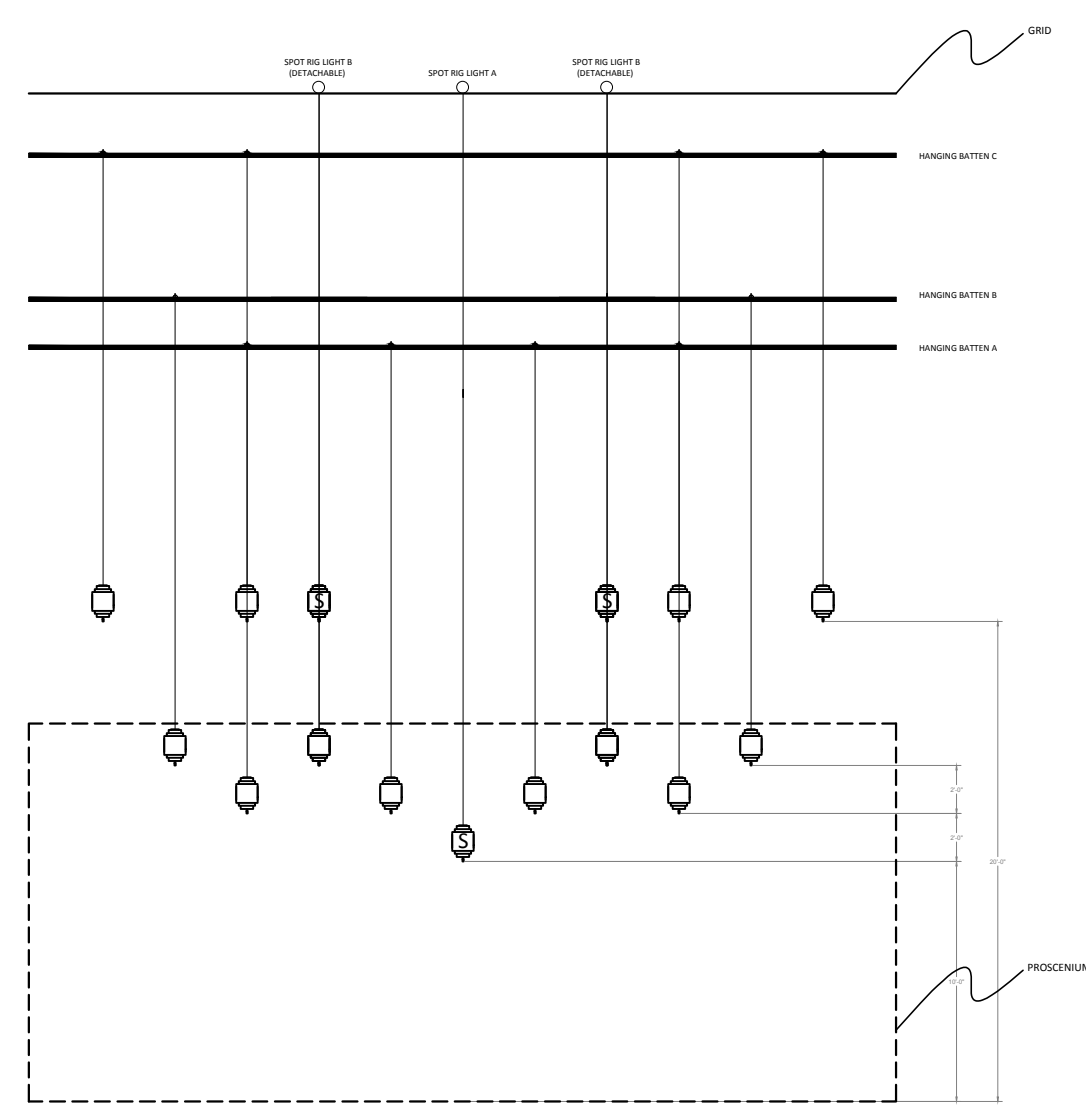
POSITION G ELEVATION



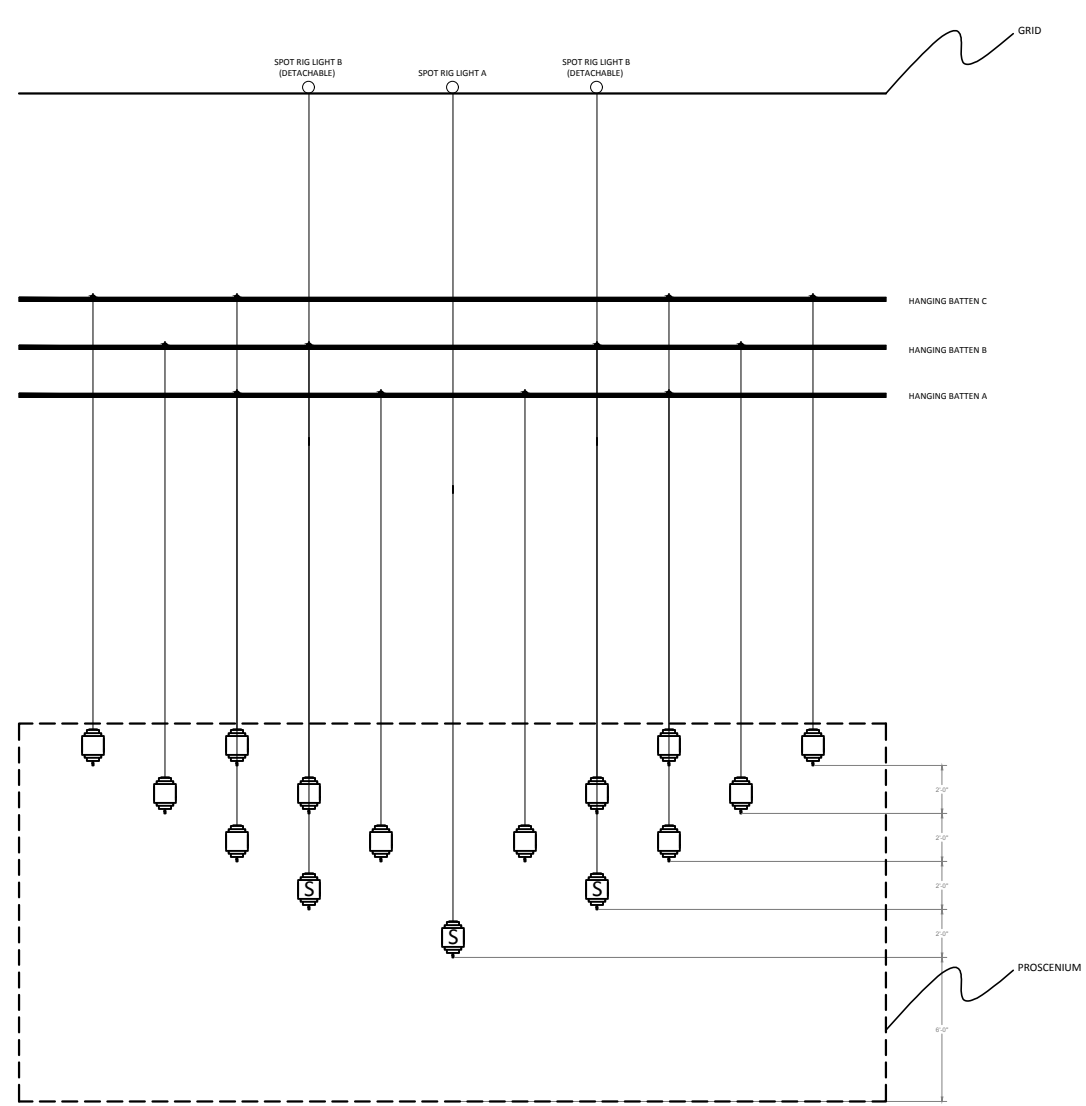
POSITION I ELEVATION



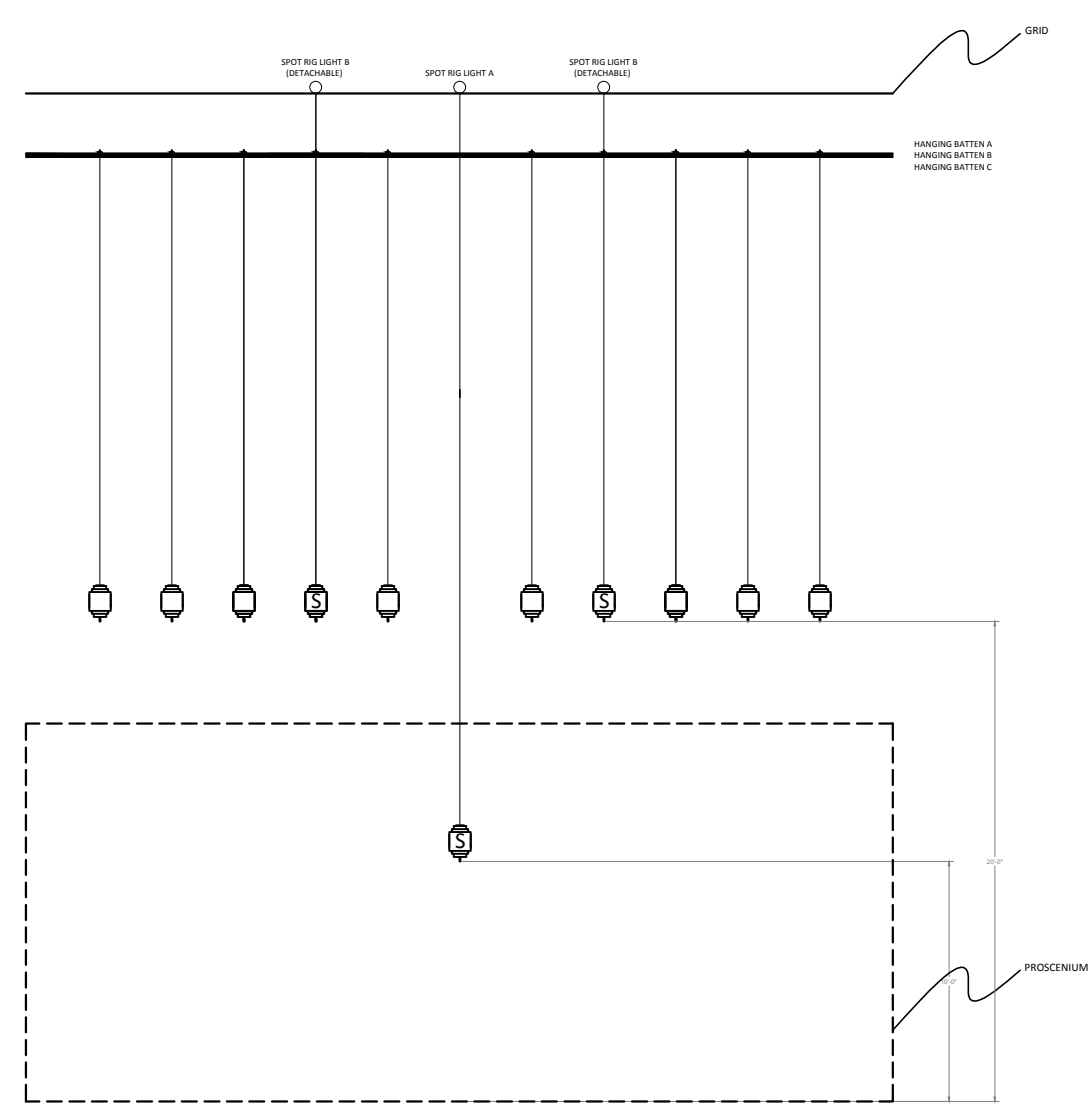
POSITION K ELEVATION



POSITION H ELEVATION



POSITION J ELEVATION



POSITION L ELEVATION

FULL SIZE PLOT - SCALE CHECK:

GENERAL NOTES  
LEG AND BORDER SIZE NEGOTIABLE

- MOBILE FURNITURE
- FLOOR PILLOW (X8)
    - 2 OUT OF 8 ARE SECURED ON TOP OF PALANQUIN
  - PALANQUIN (X2)
  - LOW COFFEE TABLE (X2)
  - HIGH COFFEE TABLE (X2)

- HANGING FIXTURES
- POSITIONS ARE NEGOTIABLE
  - IN TRIM AND OUT TRIM ARE NEGOTIABLE
- 12 LANTERNS ON 3 BATTENS**  
- 4 LANTERNS ON EACH BATTEN
- 3 SPOT RIG LANTERNS**  
- TWO OF THEM ARE DETACHABLE (LABELED ON PLAN)

REVISED

DESCRIPTION:  
NO INFORMATION HAS BEEN CHANGED BUT A NEW WAY TO REPRESENT THE PROSCENIUM TO MAKE THE DRAWING MORE COMPREHENSIBLE

DATE: FEB 17, 2016

UNIVERSITY OF BRITISH COLUMBIA - FREDERIC WOOD THEATRE

**ARABIAN NIGHTS**  
DRAWING: HANGING FIXTURES POSITIONS

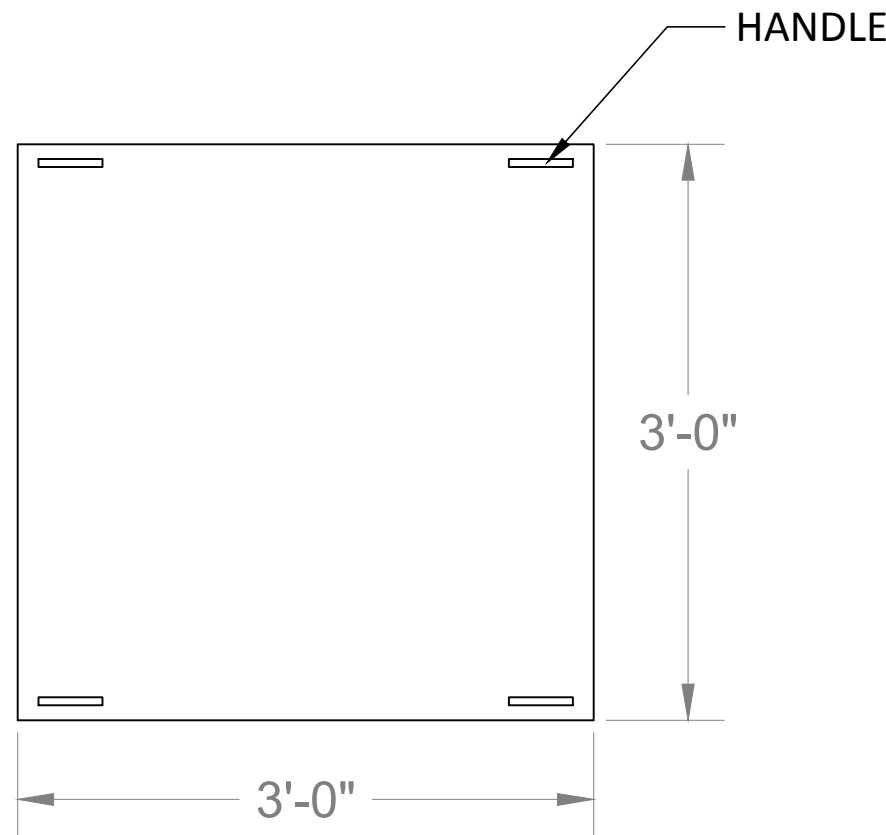
DIRECTOR: EVAN FRAYNE  
LIGHTING DESIGNER: SOPHIE TANG  
SET DESIGNER: HEIPO LEUNG  
DRAWN BY: HEIPO LEUNG

SCALE: 1/8" = 1'-0"

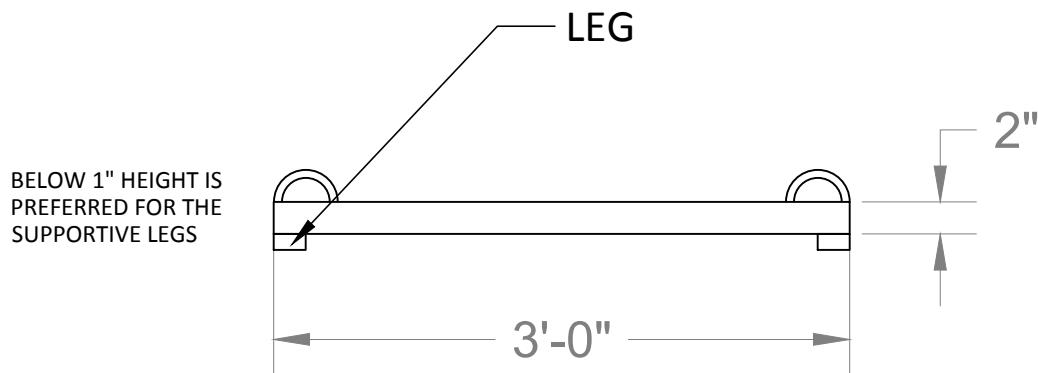
NO **3-1**

DATE: FEB 13, 2016

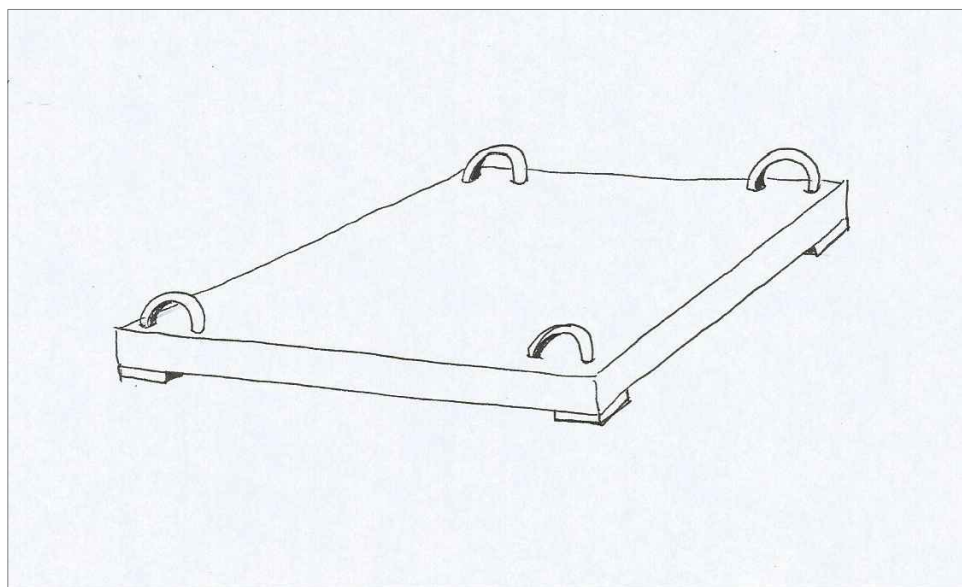
MOBILE FURNITURE - PALANQUIN DETAILS (BUILD TWO)



TOP VIEW



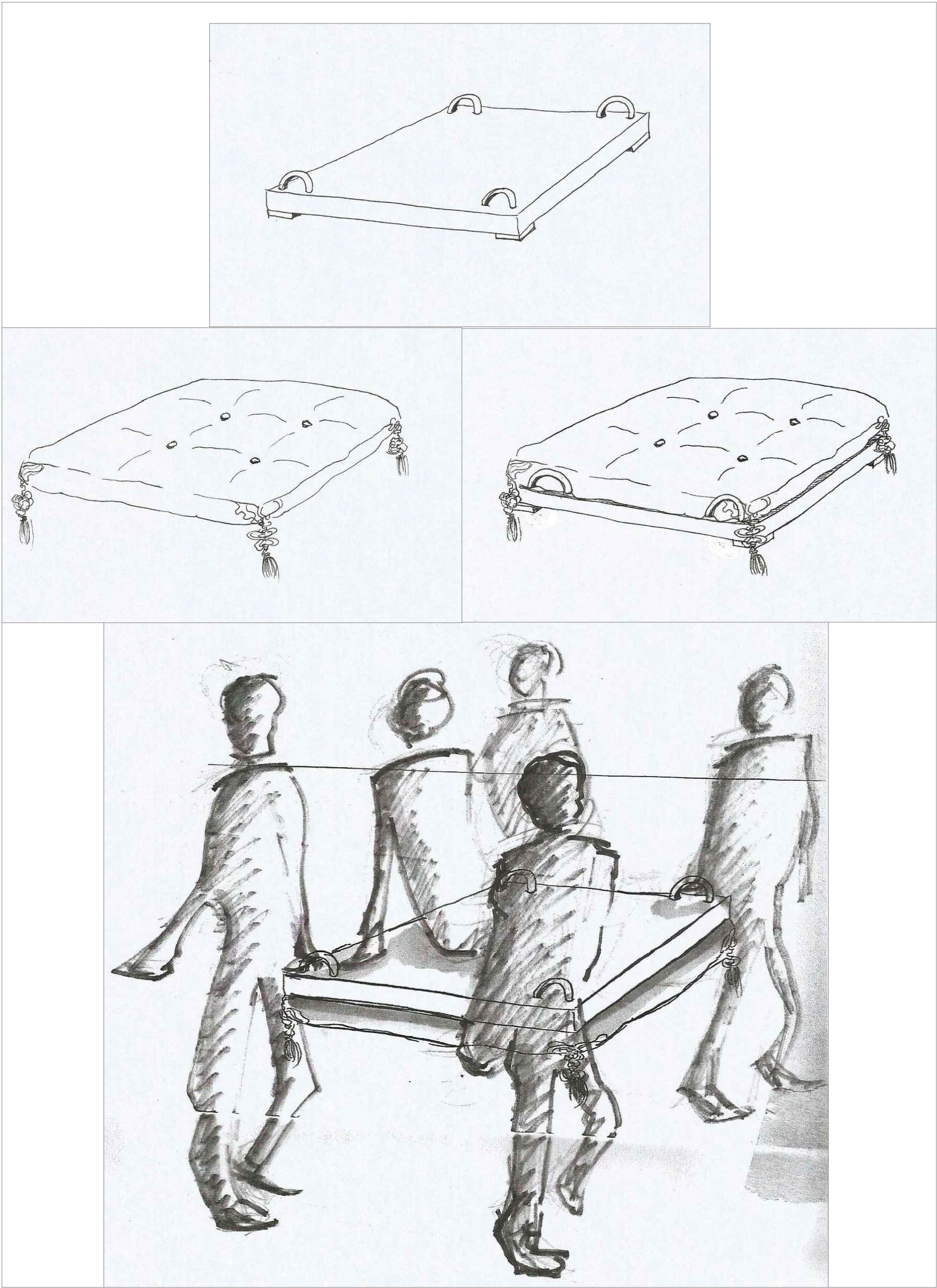
SIDE VIEW



PERSPECTIVE VIEW

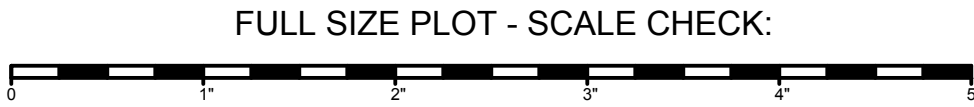
SCALE: NOT TO SCALE

- NOTE:**
1. BUILD TWO
  2. LIGHT WEIGHT MATERIALS AS MUCH AS POSSIBLE
  3. WILL BE LIFT UP AND MOVE AROUND BY 4 SMALL ACTORS
  4. MAXIMUM 2 MINUTES FOR THE LIFT UP ACTION
  5. EACH CARRY AN ACTOR WEIGHT OF AROUND 150 - 180 LBS (TBC)



SKETCH IMAGES: SECURE WITH FLOOR PILLOW & LIFT UP ACTION

SCALE: NOT TO SCALE



GENERAL NOTES  
LEG AND BORDER SIZE NEGOTIABLE

- MOBILE FURNITURE**
1. FLOOR PILLOW (X8)
    - 1.1. 2 OUT OF 8 ARE SECURED ON TOP OF PALANQUIN
  2. PALANQUIN (X2)
  3. LOW COFFEE TABLE (X2)
  4. HIGH COFFEE TABLE (X2)

- HANGING FIXTURES**
- POSITIONS ARE NEGOTIABLE
  - IN TRIM AND OUT TRIM ARE NEGOTIABLE
- 12 LANTERNS ON 3 BATTENS**  
- 4 LANTERNS ON EACH BATTEN
- 3 SPOT RIG LANTERNS**  
- TWO OF THEM ARE DETACHABLE (LABELED ON PLAN)

UNIVERSITY OF BRITISH COLUMBIA - FREDERIC WOOD THEATRE

SCALE: 1" = 1'-0"

**ARABIAN NIGHTS**

DRAWING: MOBILE FURNITURE - PALANQUIN DETAILS

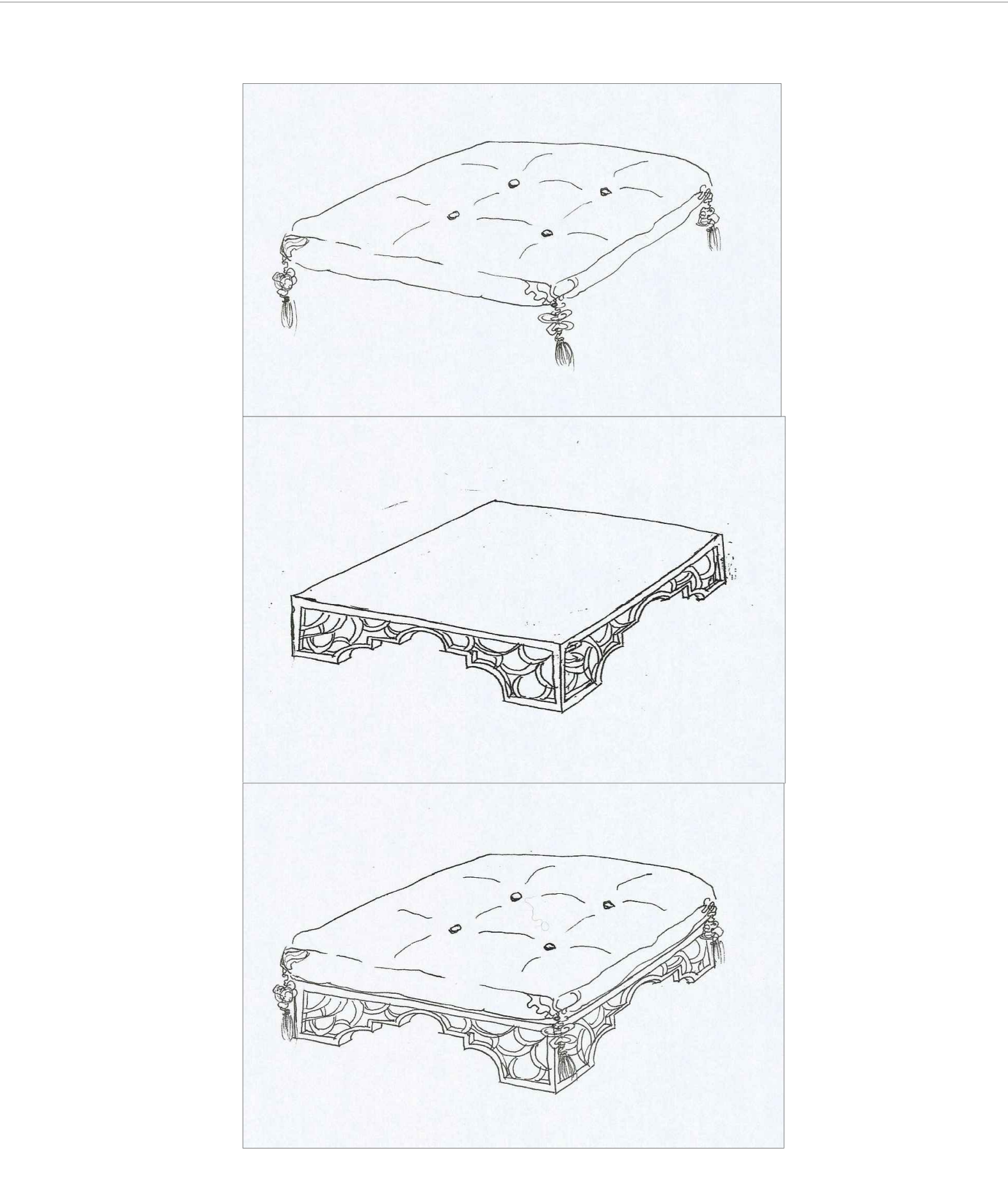
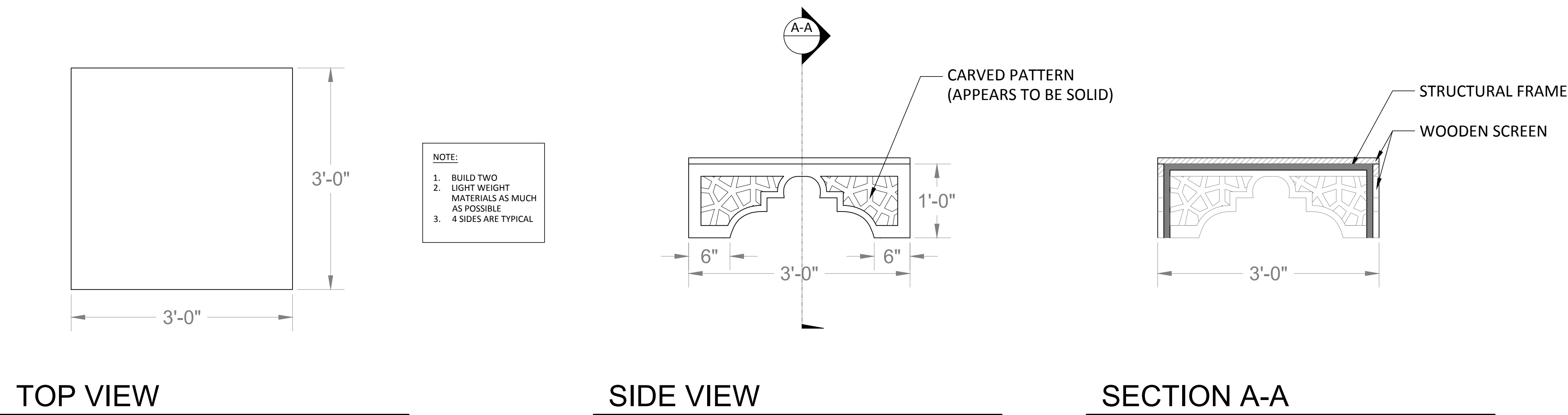
NO: **4**

DIRECTOR: EVAN FRAYNE  
LIGHTING DESIGNER: SOPHIE TANG

SET DESIGNER: HEIPO LEUNG  
DRAWN BY: HEIPO LEUNG

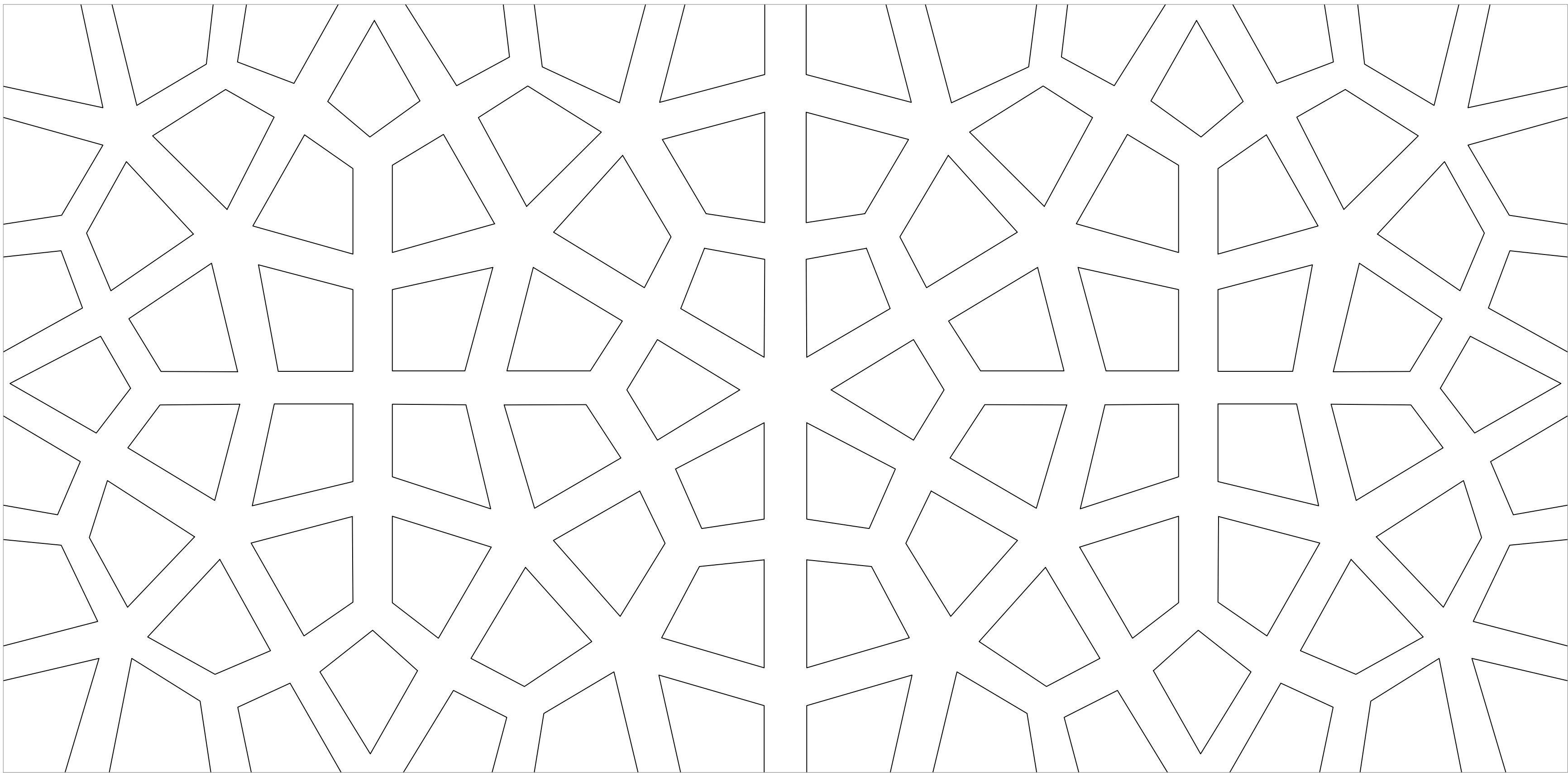
DATE: FEB 13, 2016

MOBILE FURNITURE - LOW COFFEE TABLE DETAILS (BUILD 2)



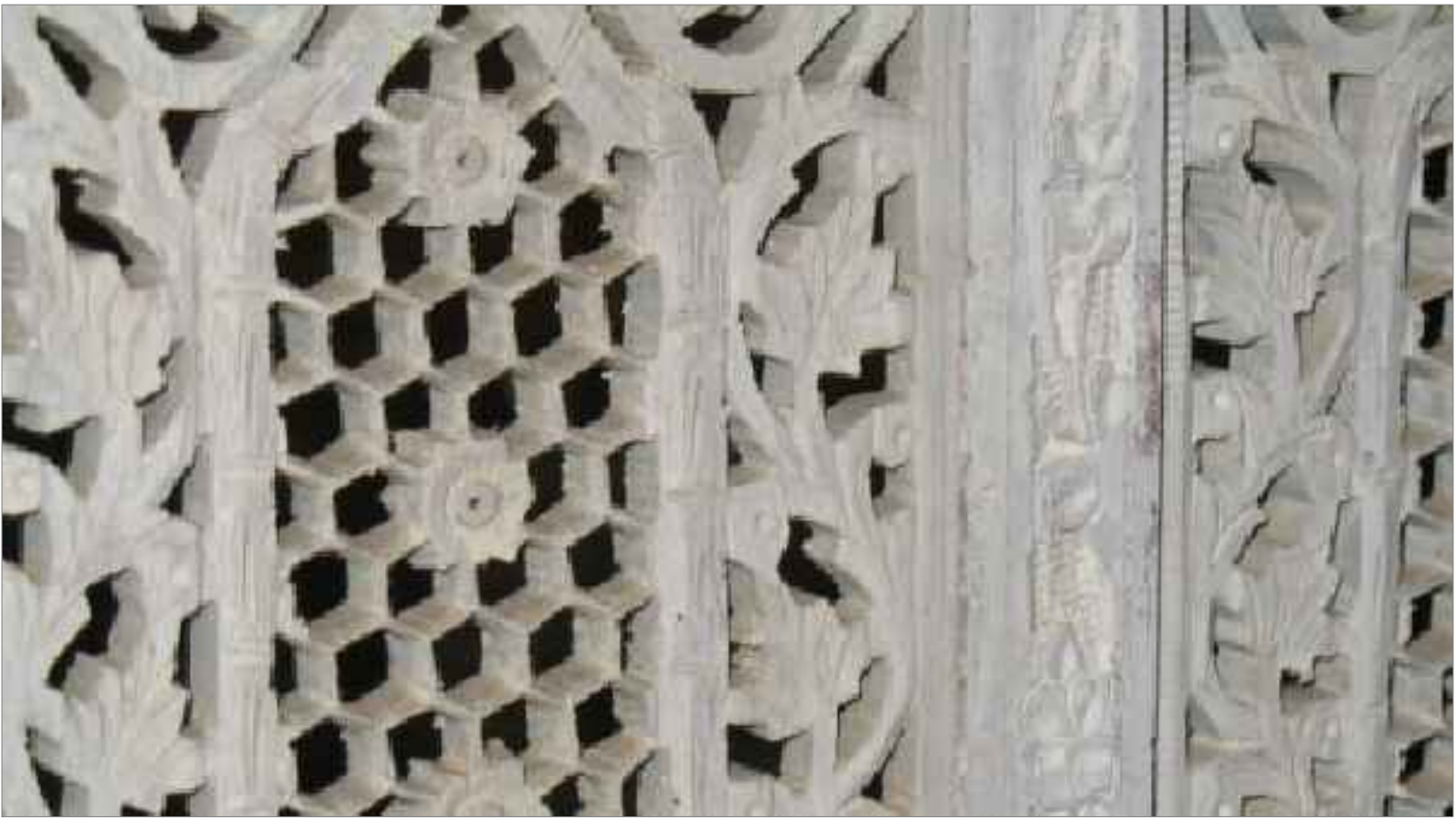
SKETCH IMAGES: ASSEMBLE WITH FLOOR PILLOW

SCALE: NOT TO SCALE



CUT SCREEN PATTERN

SCALE: HALF ACTUAL SIZE



RESEARCH IMAGE: STONE CUT PIERCED SCREEN

SCALE: NOT TO SCALE

FULL SIZE PLOT - SCALE CHECK:

GENERAL NOTES

- LEG AND BORDER SIZE NEGOTIABLE

MOBILE FURNITURE

1. FLOOR PILLOW (X8)
  - 1.1. 2 OUT OF 8 ARE SECURED ON TOP OF PALANQUIN
2. PALANQUIN (X2)
3. LOW COFFEE TABLE (X2)
4. HIGH COFFEE TABLE (X2)

HANGING FIXTURES

- POSITIONS ARE NEGOTIABLE
- IN TRIM AND OUT TRIM ARE NEGOTIABLE

**12 LANTERNS ON 3 BATTENS**

- 4 LANTERNS ON EACH BATTEN

**3 SPOT RIG LANTERNS**

- TWO OF THEM ARE DETACHABLE (LABELED ON PLAN)

UNIVERSITY OF BRITISH COLUMBIA - FREDERIC WOOD THEATRE

SCALE: 1" = 1'-0"

**ARABIAN NIGHTS**

DRAWING: MOBILE FURNITURE - LOW COFFEE TABLE DETAILS

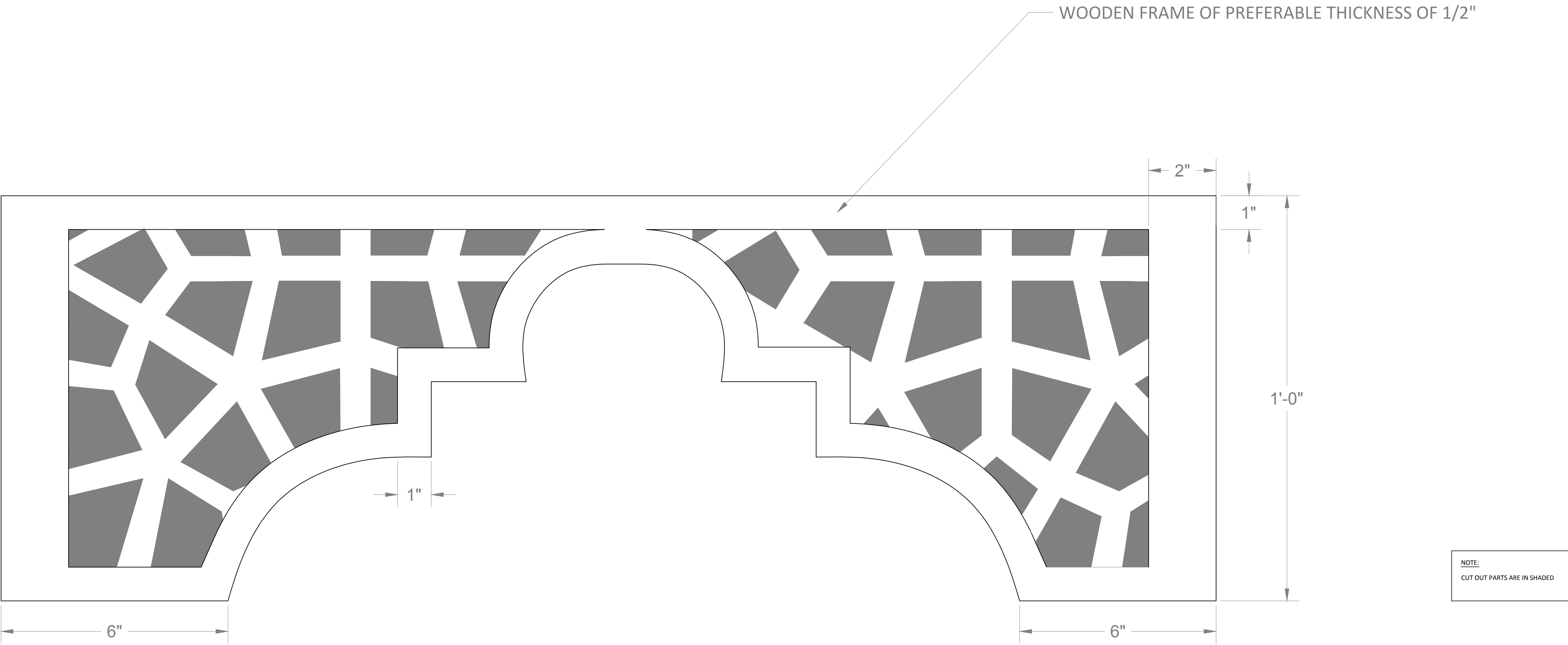
NO: **5**

DIRECTOR: EVAN FRAYNE  
LIGHTING DESIGNER: SOPHIE TANG

SET DESIGNER: HEIPO LEUNG  
DRAWN BY: HEIPO LEUNG

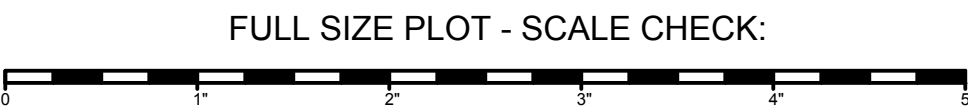
DATE: FEB 13, 2016

CUT SCREEN PATTERN DETAILS



CUT SCREEN PATTERN DETAILS

SCALE: HALF ACTUAL SIZE



GENERAL NOTES  
LEG AND BORDER SIZE NEGOTIABLE

- MOBILE FURNITURE
- FLOOR PILLOW (X8)
    - 2 OUT OF 8 ARE SECURED ON TOP OF PALANQUIN
  - PALANQUIN (X2)
  - LOW COFFEE TABLE (X2)
  - HIGH COFFEE TABLE (X2)

- HANGING FIXTURES
- POSITIONS ARE NEGOTIABLE
  - IN TRIM AND OUT TRIM ARE NEGOTIABLE
- 12 LANTERNS ON 3 BATTENS**  
- 4 LANTERNS ON EACH BATTEN
- 3 SPOT RIG LANTERNS**  
- TWO OF THEM ARE DETACHABLE (LABELED ON PLAN)

UNIVERSITY OF BRITISH COLUMBIA - FREDERIC WOOD THEATRE

SCALE: HALF ACTUAL SIZE

ARABIAN NIGHTS

DRAWING: MOBILE FURNITURE - LOW COFFEE TABLE DETAILS

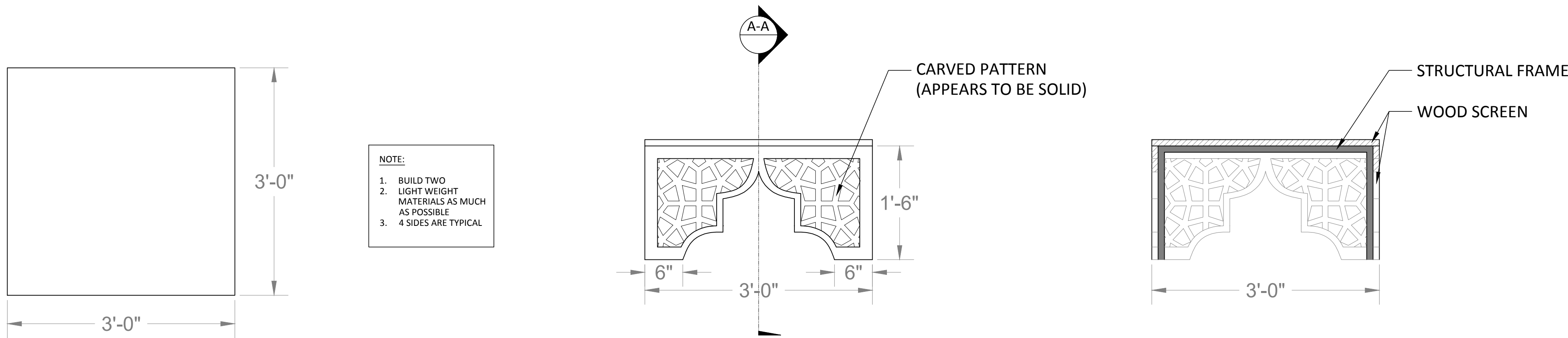
NO. **5-1**

DIRECTOR: EVAN FRAYNE  
LIGHTING DESIGNER: SOPHIE TANG

SET DESIGNER: HEIPO LEUNG  
DRAWN BY: HEIPO LEUNG

DATE: FEB 13, 2016

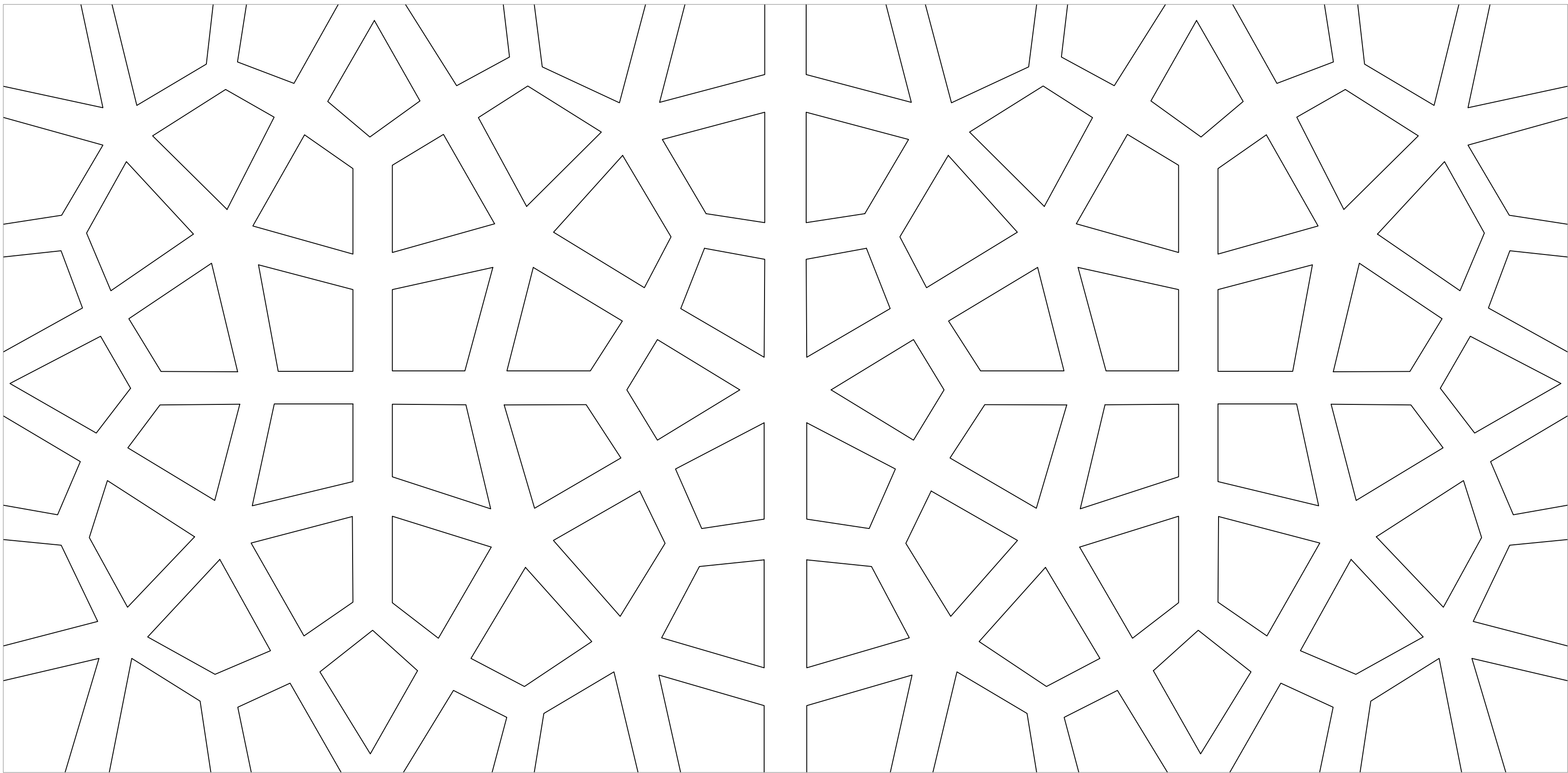
MOBILE FURNITURE - HIGH COFFEE TABLE DETAILS (BUILD 2)



TOP VIEW

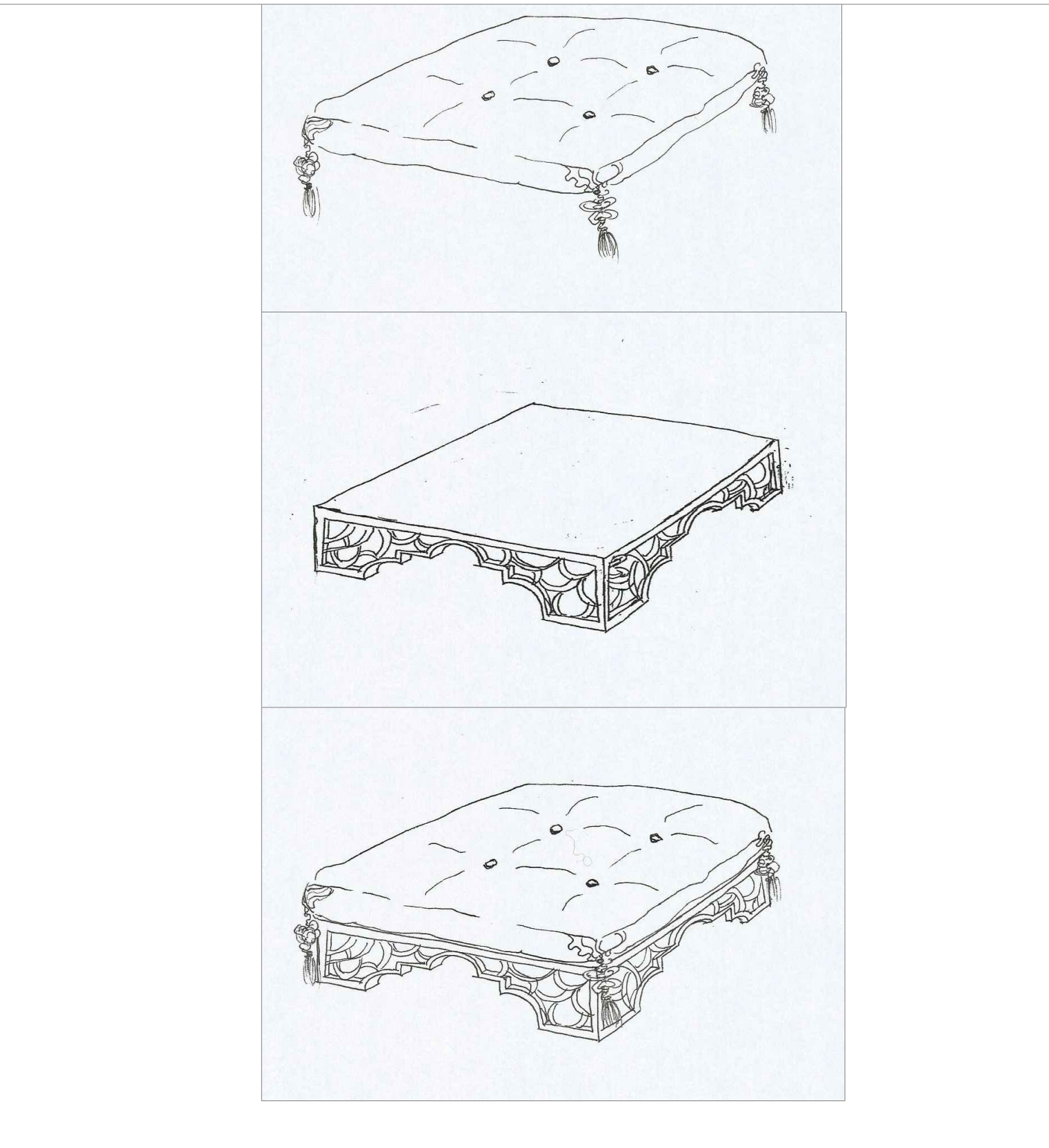
SIDE VIEW

SECTION A-A



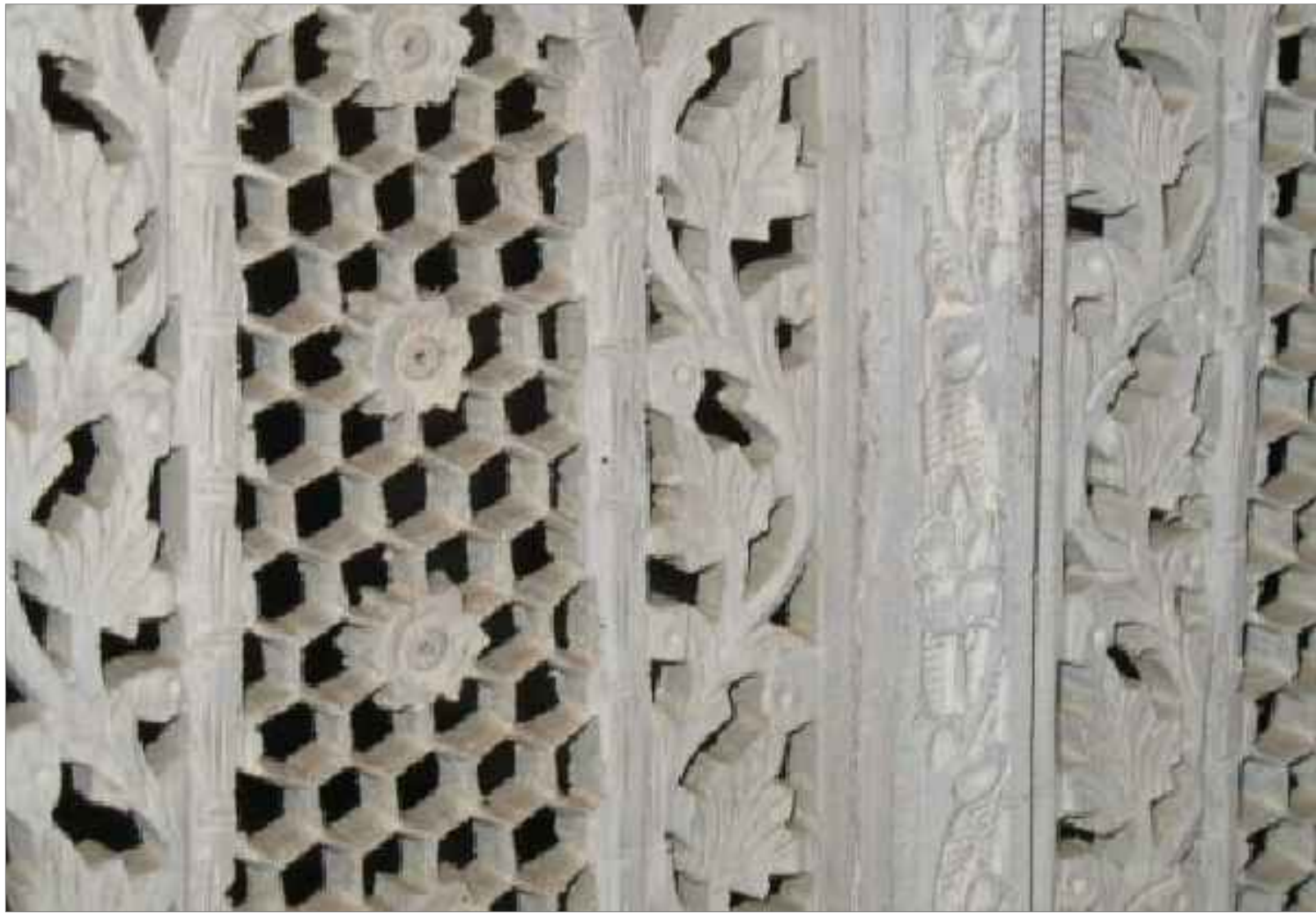
CUT SCREEN PATTERN

SCALE: HALF ACTUAL SIZE



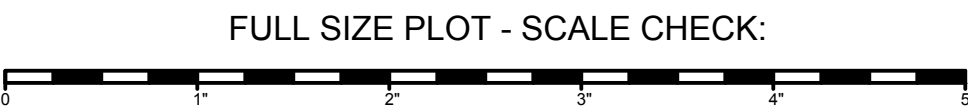
SKETCH IMAGES: ASSEMBLE WITH FLOOR PILLOW

SCALE: NOT TO SCALE



RESEARCH IMAGE: STONE CUT PIERCED SCREEN

SCALE: NOT TO SCALE



GENERAL NOTES  
LEG AND BORDER SIZE NEGOTIABLE

MOBILE FURNITURE  
1. FLOOR PILLOW (X8)  
1.1. 2 OUT OF 8 ARE SECURED ON TOP OF PALANQUIN  
2. PALANQUIN (X2)  
3. LOW COFFEE TABLE (X2)  
4. HIGH COFFEE TABLE (X2)

HANGING FIXTURES  
• POSITIONS ARE NEGOTIABLE  
• IN TRIM AND OUT TRIM ARE NEGOTIABLE  
12 LANTERNS ON 3 BATTENS  
- 4 LANTERNS ON EACH BATTEN  
3 SPOT RIG LANTERNS  
- TWO OF THEM ARE DETACHABLE (LABELED ON PLAN)

UNIVERSITY OF BRITISH COLUMBIA - FREDERIC WOOD THEATRE

SCALE: 1" = 1'-0"

ARABIAN NIGHTS

DRAWING: MOBILE FURNITURE - HIGH COFFEE TABLE DETAILS

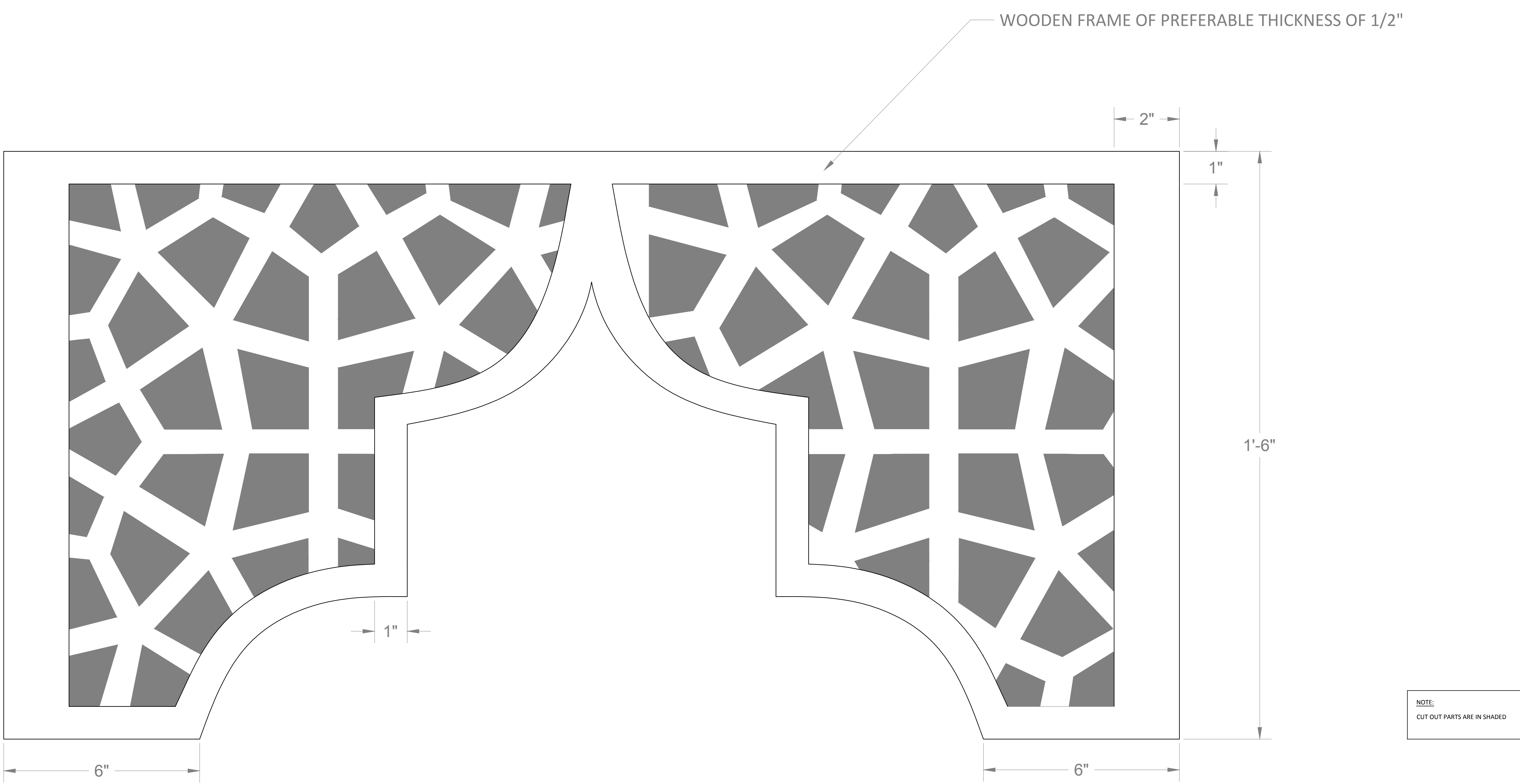
NO: 6

DIRECTOR: EVAN FRAYNE  
LIGHTING DESIGNER: SOPHIE TANG

SET DESIGNER: HEIPO LEUNG  
DRAWN BY: HEIPO LEUNG

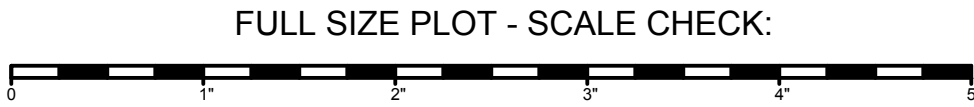
DATE: FEB 13, 2016

CUT SCREEN PATTERN DETAILS



CUT SCREEN PATTERN DETAILS

SCALE: HALF ACTUAL SIZE



GENERAL NOTES  
LEG AND BORDER SIZE NEGOTIABLE

- MOBILE FURNITURE
- FLOOR PILLOW (X8)
    - 2 OUT OF 8 ARE SECURED ON TOP OF PALANQUIN
  - PALANQUIN (X2)
  - LOW COFFEE TABLE (X2)
  - HIGH COFFEE TABLE (X2)

- HANGING FIXTURES
- POSITIONS ARE NEGOTIABLE
  - IN TRIM AND OUT TRIM ARE NEGOTIABLE
- 12 LANTERNS ON 3 BATTENS**  
- 4 LANTERNS ON EACH BATTEN
- 3 SPOT RIG LANTERNS**  
- TWO OF THEM ARE DETACHABLE (LABELED ON PLAN)

UNIVERSITY OF BRITISH COLUMBIA - FREDERIC WOOD THEATRE

SCALE: HALF ACTUAL SIZE

ARABIAN NIGHTS

DRAWING: MOBILE FURNITURE - LOW COFFEE TABLE DETAILS

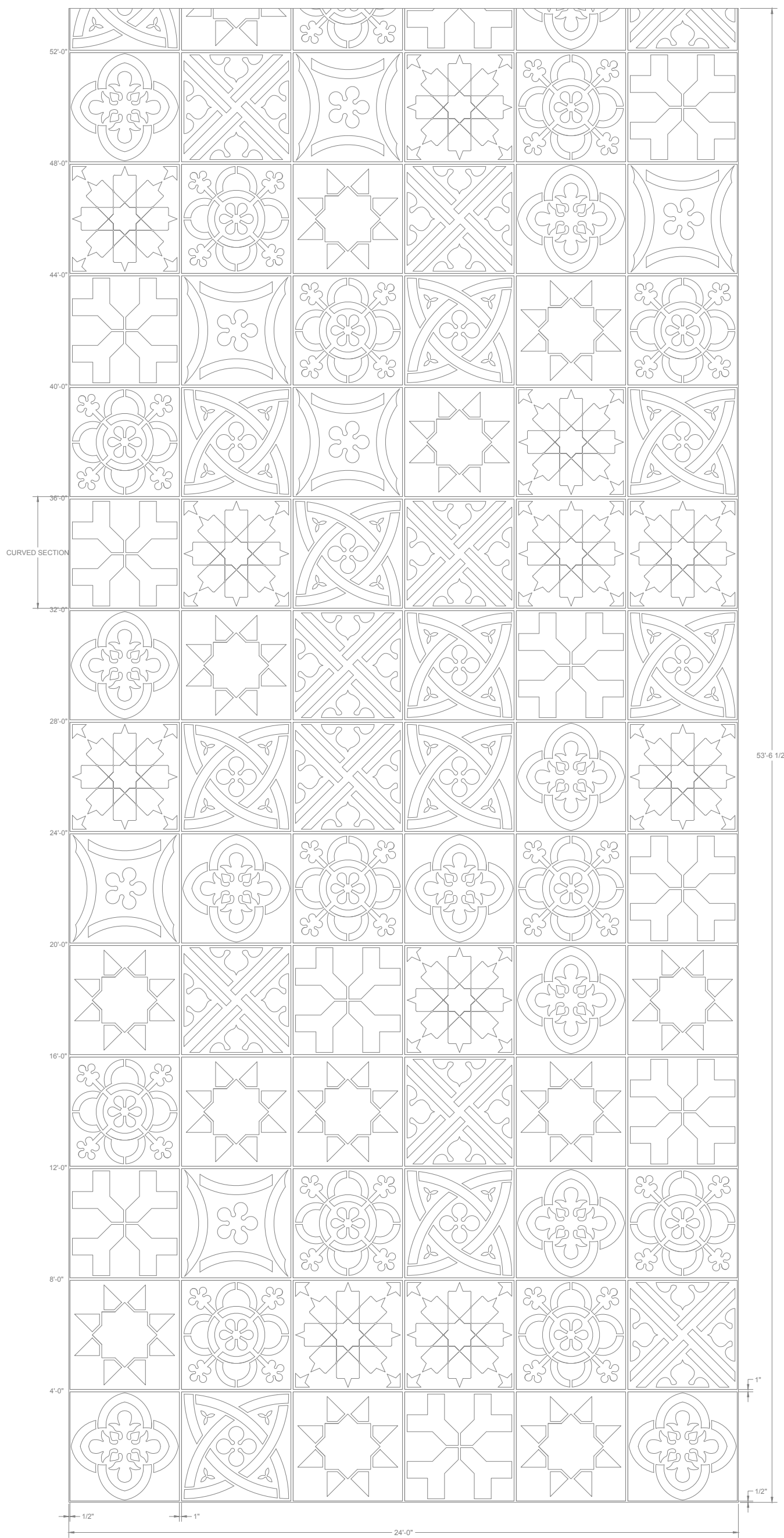
NO. **6-1**

DIRECTOR: EVAN FRAYNE  
LIGHTING DESIGNER: SOPHIE TANG

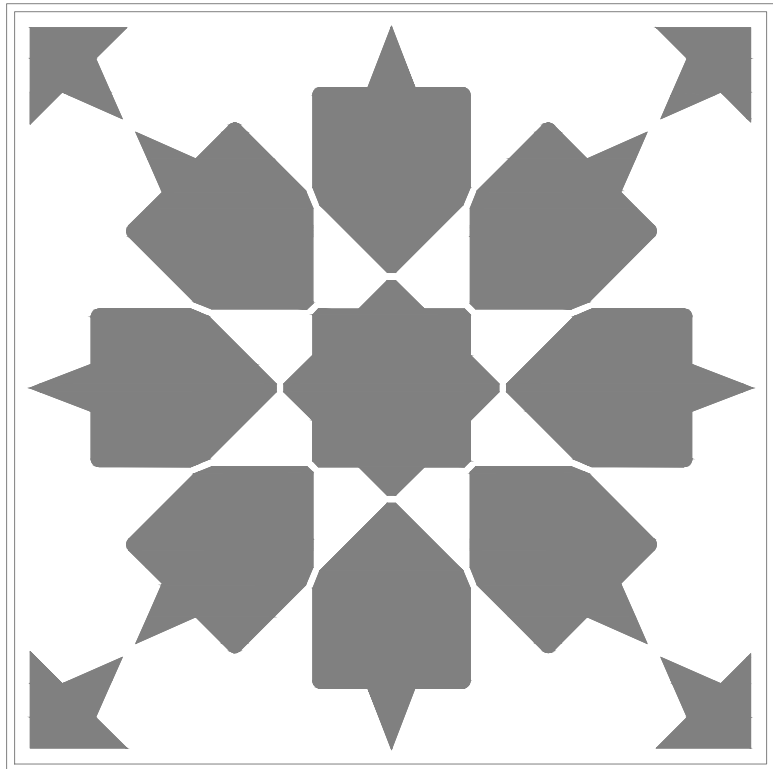
SET DESIGNER: HEIPO LEUNG  
DRAWN BY: HEIPO LEUNG

DATE: FEB 13, 2016

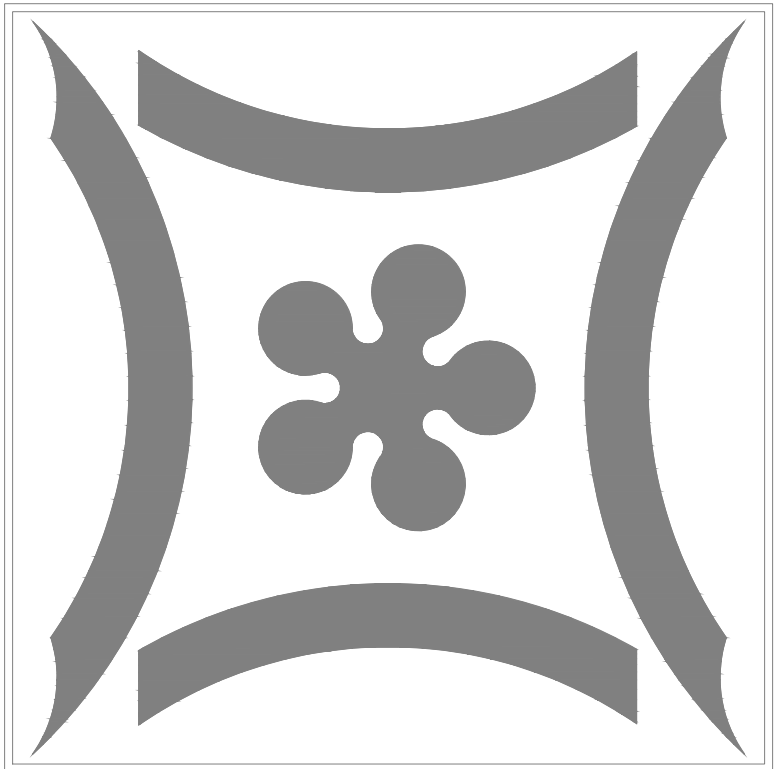
PAINT ELEVATION



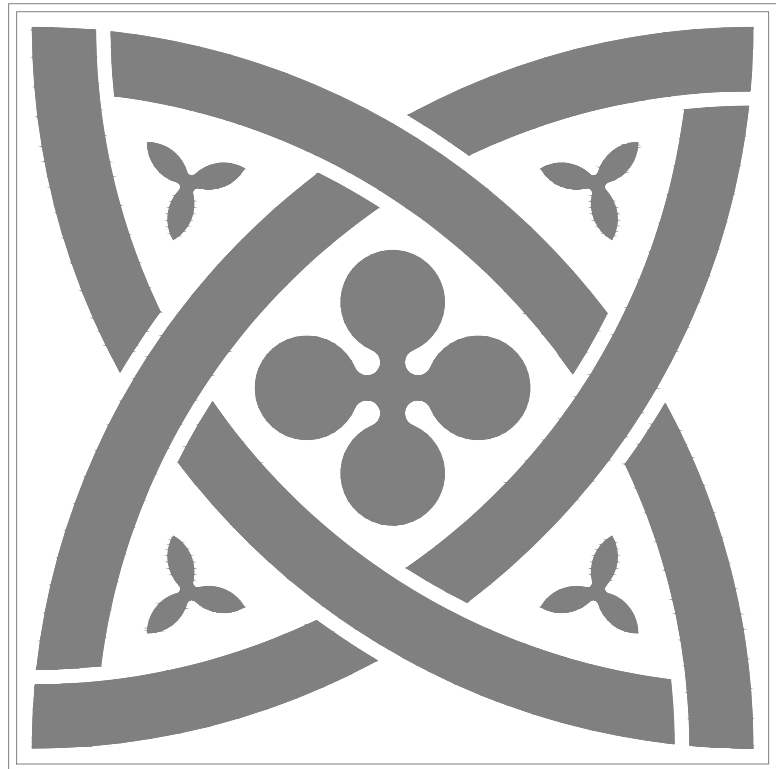
**NOTE:**  
**CURVED WALL PAINT ELEVATION**  
- 24'W X 53'-6 1/2"H  
- COVERED AREA: TOP OF THE CURVED WALL TO TOP OF THE APRON  
- PATTERN DESCRIPTION: 6 COLUMNS AND 13 AND A HALF ROWS OF 4'X4' TILE PATTERN (INCLUDED 1/2" PAINTED SEAM LINE ON EACH SIDE)  
- 1/2" PAINTED SEAM LINE ON 3 SIDES OF THE PAINT AREA (DS, USL, USR)  
**STENCILS**  
- 4' x 4'  
- CUT OUT PARTS ARE IN SHADED



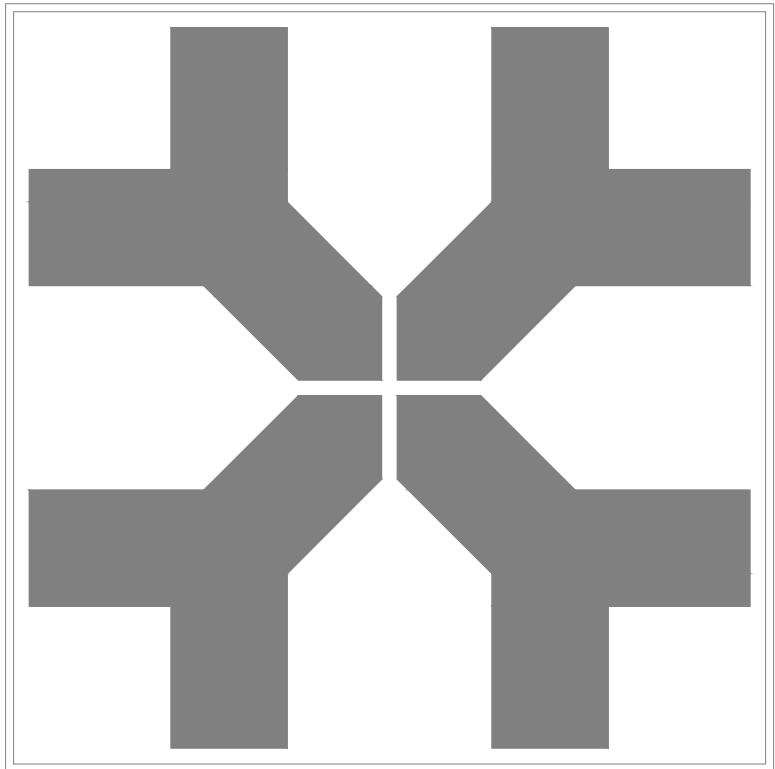
PATTERN A



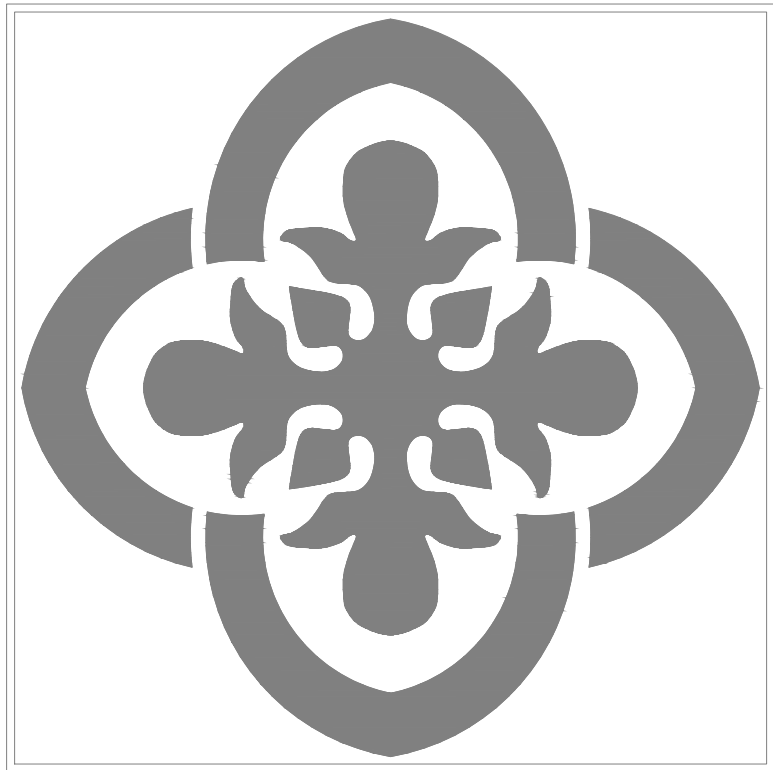
PATTERN B



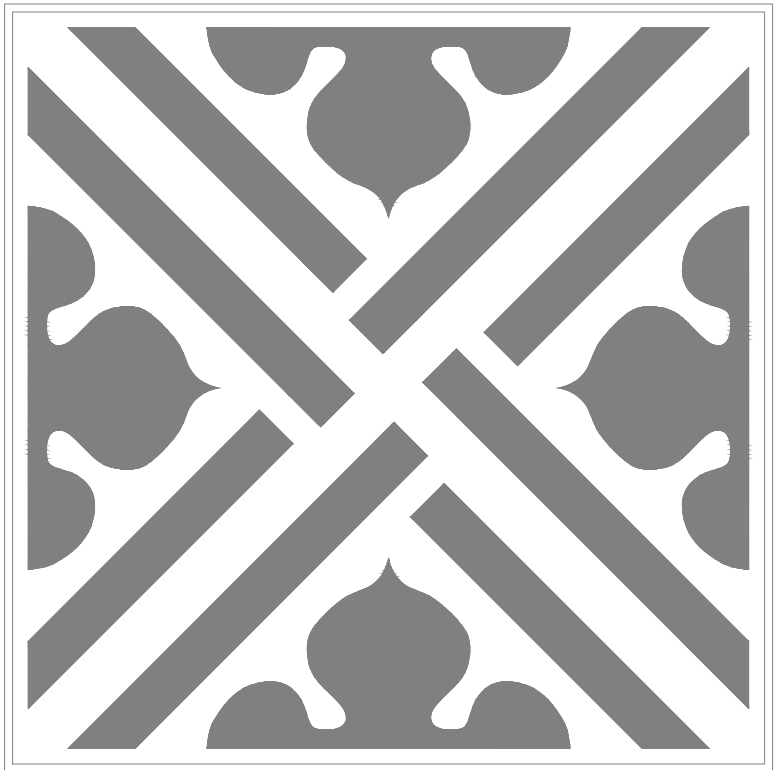
PATTERN C



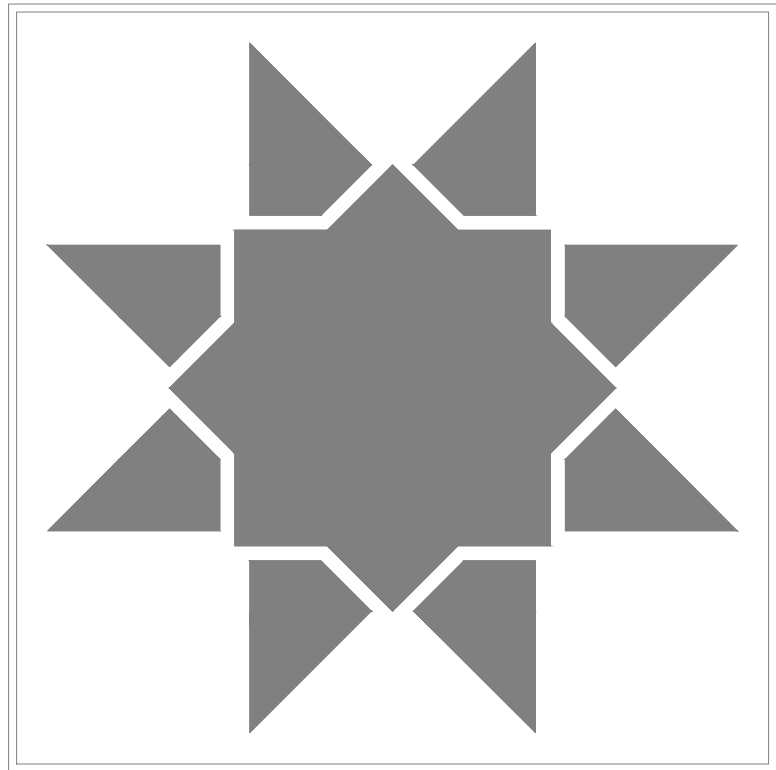
PATTERN D



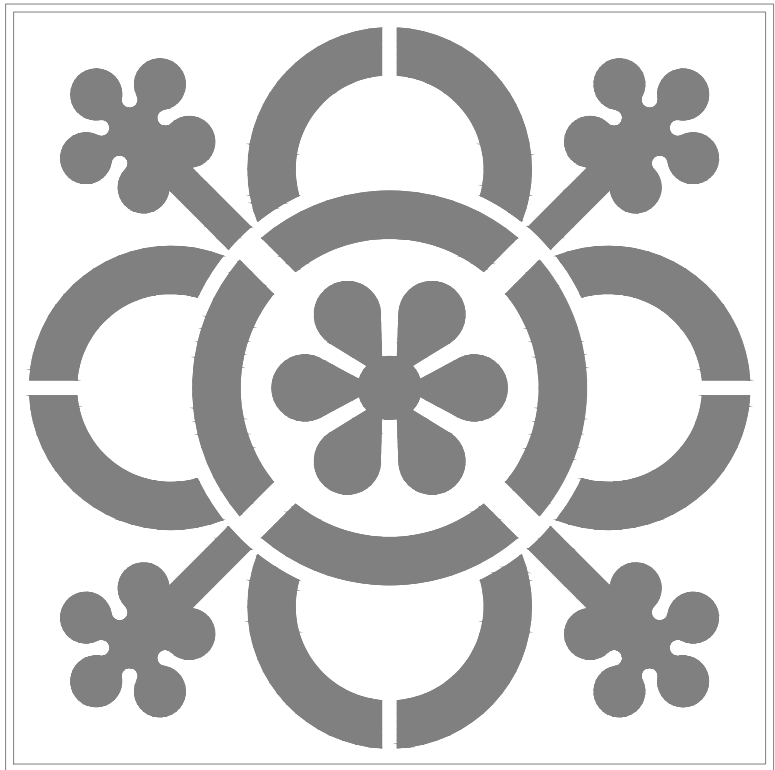
PATTERN E



PATTERN F



PATTERN G



PATTERN H

FLATTENED CURVED WALL PAINT ELEVATION

STENCILS' DETAILS

SCALE: 1' = 1'-0"

FULL SIZE PLOT - SCALE CHECK:



**GENERAL NOTES**  
- LEG AND BORDER SIZE NEGOTIABLE

**MOBILE FURNITURE**  
1. FLOOR PILLOW (X8)  
1.1. 2 OUT OF 8 ARE SECURED ON TOP OF PALANQUIN  
2. PALANQUIN (X2)  
3. LOW COFFEE TABLE (X2)  
4. HIGH COFFEE TABLE (X2)

**HANGING FIXTURES**  
• POSITIONS ARE NEGOTIABLE  
• IN TRIM AND OUT TRIM ARE NEGOTIABLE  
**12 LANTERNS ON 3 BATTENS**  
- 4 LANTERNS ON EACH BATTEN  
**3 SPOT RIG LANTERNS**  
- TWO OF THEM ARE DETACHABLE (LABELED ON PLAN)

UNIVERSITY OF BRITISH COLUMBIA - FREDERIC WOOD THEATRE

SCALE: 1/4" = 1'-0"

**ARABIAN NIGHTS**

DRAWING: CURVED WALL PAINT ELEVATION

NO: **7**

DIRECTOR: EVAN FRAYNE  
LIGHTING DESIGNER: SOPHIE TANG

SET DESIGNER: HEIPO LEUNG  
DRAWN BY: HEIPO LEUNG

DATE: FEB 13, 2016